

Spare Part Book



AGFN



GEO Italy S.R.L.

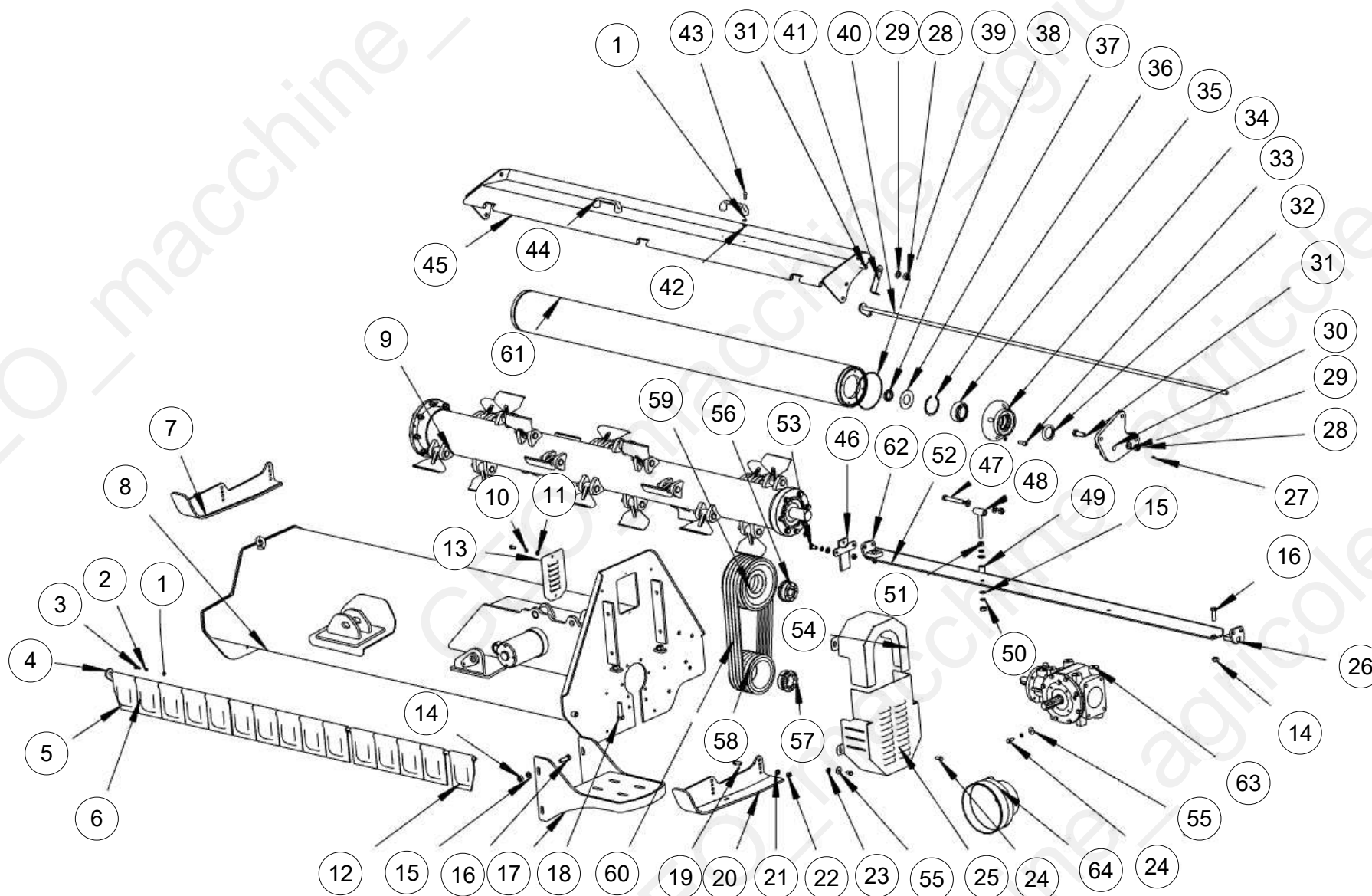
Latest release: 16/03/2021

Via G. Abbate, 215, 14054 Castagnole delle Lanze AT

Page 1

Table of Contents

Tavola	Page
AGFN_parte 1	3
AGFN_parte 2	8
AGFN_parte 3	11
AGFN_parte 4	13
AGFN_gearbox140-180	15
AGFN_gearbox200-220	17



Pos	Code	Description	NOTE	Q.
1	GB97.1-8	Plain washer 8		12
2	GB93-8	Spring washer 8		8
3	GB5783-M8x20	bolt M8X20		4
4	EFAGF140.030-N	Board hanging rod 140		1
4	EFAGF160.030-N	Board hanging rod 160		1
4	EFAGF180.030-N	Board hanging rod 180		1
4	EFAGF200.030-N	Board hanging rod 200	(L=2040)	1
4	EFAGF220.030-N	Board hanging rod 220		1
5	EFAG140.111B	board(left corner cut)		1
6	EFAG140.111	Board		13
7	EFAGF200.032-N	Sliding rail left		1
8	EFAGF140.015-N	Body cover(140N)		1
8	EFAGF160.015-N	Body cover (160N)		1
8	EFAGF180.015-N	Body cover (180N)		1
8	EFAGF200.015-N	Body cover (200N)		1
8	EFAGF220.015-N	Body cover (220N)		1
10	GB93-10	spring washer 10		10
11	GB97.1-10	PLAIN WASHER 10		5
12	EFAG140.111C	board(right corner cut)		1
13	AGFR245-0000-03	Sealing plate 1		1
14	DIN985-M14	Locking Nut M14		11
15	GB97.1-14	Plain washer 14		14
16	GB5783-M14X45	Bolt M14X45		10
17	AGFR245-1900-00	Gear box seat(200-240)		1
17	EFAGF200.026-N	Gear box seat(140-180)		1

Pos	Code	Description	NOTE	Q.
18	GB5786-M16X1.5X60	Full thread bolt M16X1.5X60		2
19	GB5783-M12X30	Bolt M12X30		11
20	EFAGF200.031-N	Sliding rail right		1
21	GB97.1-12	plain washer 12		20
22	DIN985-M12	nut M12		14
23	DIN985-M10	Locking nut M10		2
24	GB5783-M10X25	Bolt M10X25		2
25	AGFR245-2200-00	Belt pulley below cover (200-240)		1
25	EFAGF200.014-N	Belt pulley below cover(140-180)		1
26	EFAGF200.029-N	Right scraper hanger		1
27	GB1152-M6	Grease Nipple M6		2
28	DIN985-M16	Locking Nut M16		24
29	GB97.1-16	Plain washer 16		6
30	EFAG200.020-N	Roller left hanger		1
31	GB5783-M16x45	Bolt M16x45		6
32	CFW-50x65x8	FB oil seal 50X65X8		2
33	GB70.1-M10x30	Bolt M10x30		8
34	VM190.112	Bearing seat		2
35	GB276-62208-Z	Deep groove ball bearing		2
36	GB893.1-80	Seeger ring 80		2
37	VM190.107	Adjusting pad(Ø80XØ41)		2
38	JB4342-40(2.5mm)	Check ring		2
39	GB3452.1-G-150X3.55	O sealing ring		2
40	AGZ-140.017-N	rod(140N)		1
40	AGZ-160.017-N	rod (160N)		1

Machine: AGFN

Assembly: AGFN_parte 1



Pos	Code	Description	NOTE	Q.
40	AGZ-180.017-N	rod (180N)		1
40	AGZ-200.017-N	rod (200N)		1
40	AGZ-220.017-N	rod (220N)		1
41	EFAG140.142-AGMZ	Nipple seat		1
42	DIN985-M8	nut M8		4
43	GB70.1-M8X20	Bolt M8x20		4
44	RKH120-BS	handle		2
45	AGZ-140.012-N	Back shield(140N)		1
45	AGZ-160.012-N	Back shield(160N)		1
45	AGZ-180.012-N	Back shield(180N)		1
45	AGZ-200.012-N	Back shield(200N)		1
45	AGZ-220.012-N	Back shield(220N)		1
46	AGMZ-200.017-N	Rabbet board		1
47	GB5782-M14X100	Half thread bolt M14X100		1
48	EFAGF200.033-N	Scraper studdle		1
49	EFAGF200.230-N	Spacer bush		1
50	GB93-14	spring washer 14		2
51	GB6170-M14	Nut 14		4
52	EFAGF140.219-N	scraper(140N)		1
52	EFAGF160.219-N	scraper(160N)		1
52	EFAGF180.219-N	scraper (180N)		1
52	EFAGF200.219-N	scraper(200N)		1
52	EFAGF220.219-N	scraper (220N)		1
53	GB70.3-M12x30	Bolt M12x30		2
54	AGFR245-2000-00	Belt pulley upper cover (200-240)		1

GEO Italy S.R.L.

Via G. Abbate, 215, 14054 Castagnole delle Lanze AT

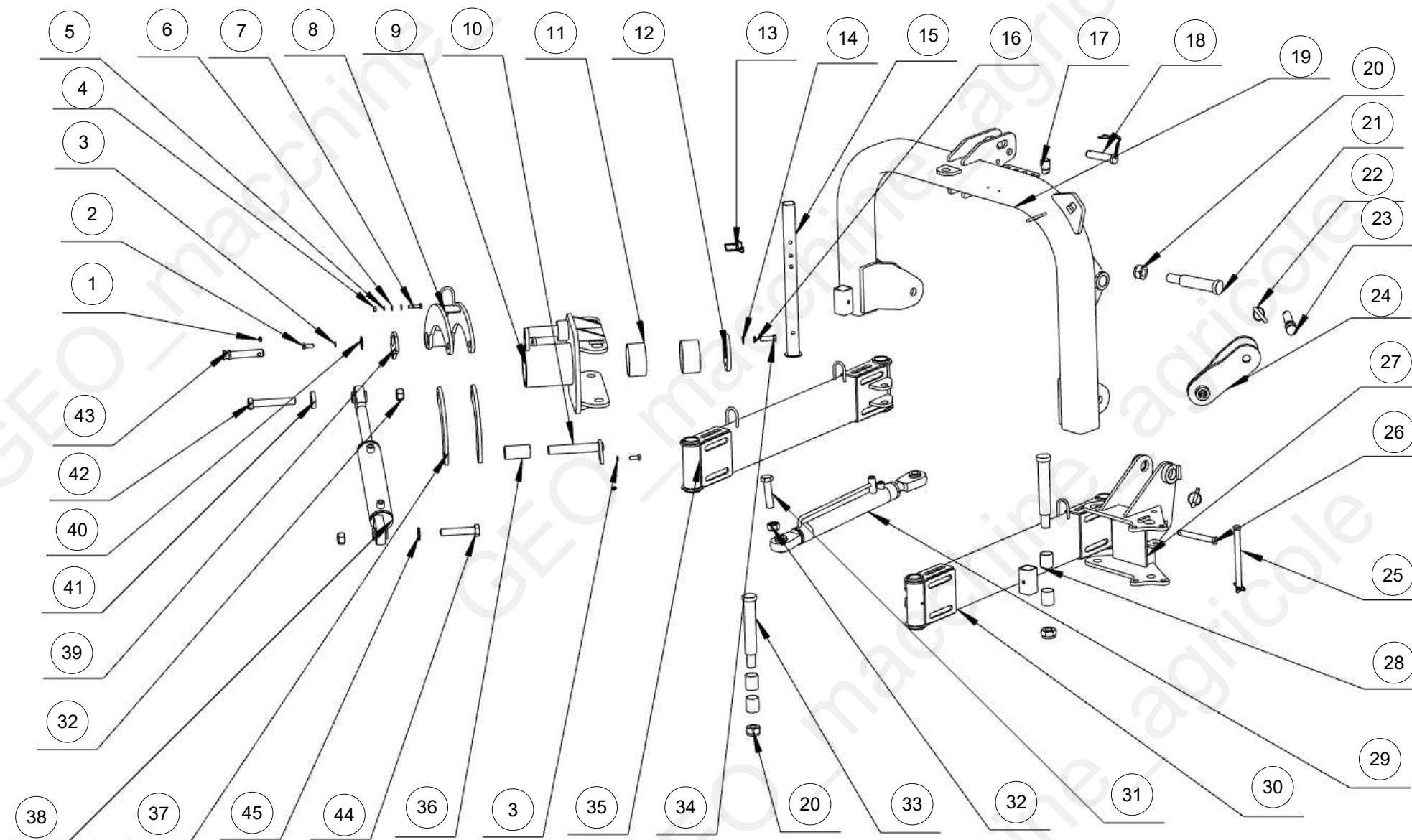
Page 6

Machine: AGFN

Assembly: AGFN_parte 1



Pos	Code	Description	NOTE	Q.
54	EFAGF200.013-N	Belt pulley upper cover(140-180)		1
55	GB96.1-10	Plain washer 10		4
56	REACH15-33X80	Power lock 33X80		1
57	REACH15-45X80	Power lock 45X80		1
58	AGF220.202.4	Small belt pulley 165 mm 4 grooves		1
58	AGFR245-0000-15	Small belt pulley (five grooves- 200-240)		1
59	AGF220.203.4	Big belt pulley 220 mm 4 grooves		1
59	AGFR245-0000-16	Big belt pulley (five grooves200-240)		1
60	GB/1154-17.50	BELT B 50 (1270Li)		5
61	VM140.015	roller(140)(L=1220)		1
61	VM160.015	roller (160)(L=1420)		1
61	VM180.015	roller (180)(L=1620)		1
61	VM200.015	roller (200)(L=1820)		1
61	VM220.015	roller (220)(L=2020)		1
62	EFAGF200.028-N	Scraper left hanger		1
63	AGFR245-0300-00	AGFR245 gear box(AGFN200-240)		1
63	XH50.300Z.03W	Gearbox AGE-(AGF140-180)		1
64	FM120.00.199C	PTO cover		1



Machine: AGFN

Assembly: AGFN_parte 2



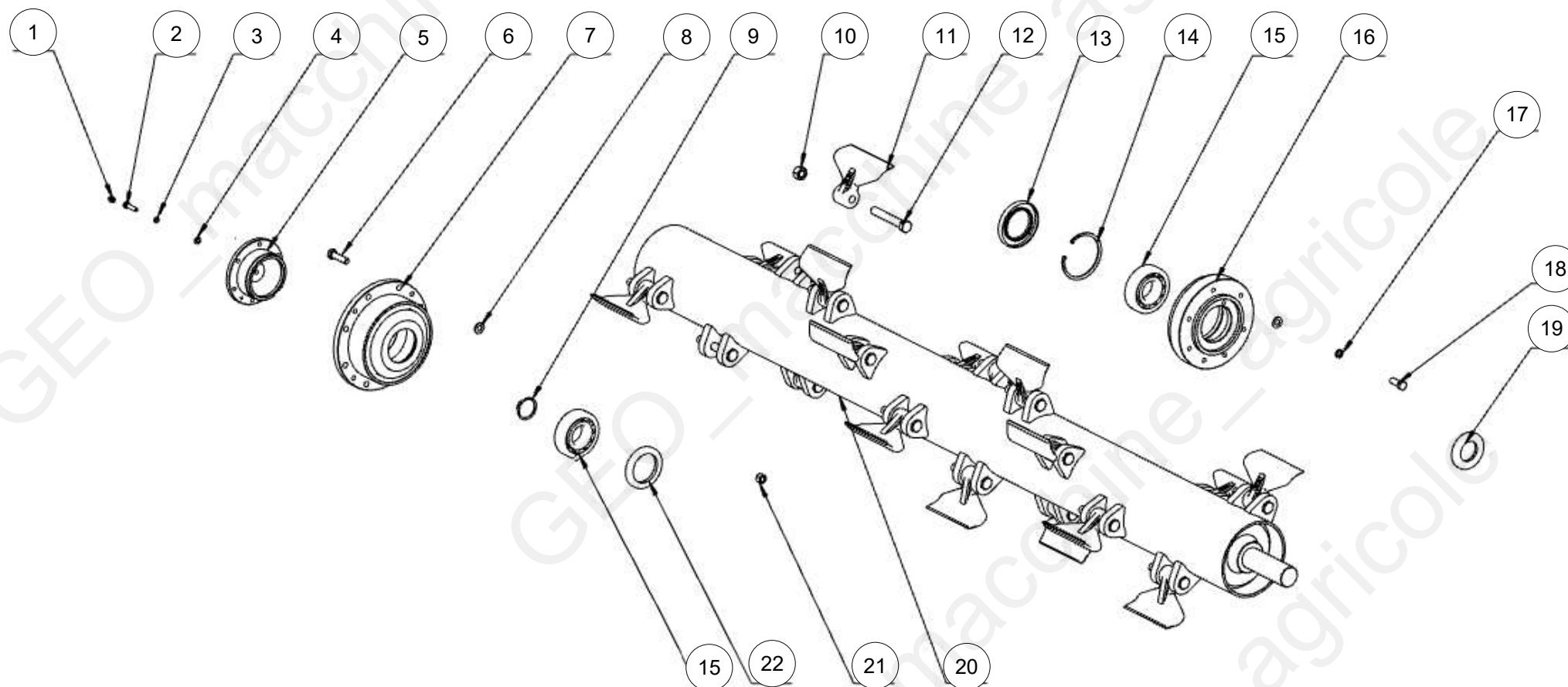
Pos	Code	Description	NOTE	Q.
1	GB1152-M10X1	Grease Nipple M10x1		7
2	GB5783-M12x30	Bolt M12X30		2
3	GB93-12	spring washer 12		2
4	GB6170-M10	Nut 10		2
5	GB93-10	spring washer 10		2
6	GB97.1-10	PLAIN WASHER 10		4
7	GB5783-M10x40	Bolt M10X40		2
8	AGFR245-1100-00	Moon plate(200N-220N-240N)		1
8	EFAGF140.027	The moon plate AGFN(140N-160N-180N)		1
9	AGFR245-2300-00	Sway spindle (200N-220N-240N)		1
9	EFAGF140.025J	Sway spindle(140N-160N-180N)		1
10	EFAGF200.034-N	Push plate pin		1
11	SF-2-110X115X60	Self lubricating bearing		2
12	EFAGF140.105	Cover		1
13	EF100.00.111A	square angle pin		2
14	GB97.1-14	Plain washer 14		4
15	AGFR245-0400-00	Short supporting leg		2
16	GB93-14	spring washer 14		4
17	AGFR245-2500-00	Quick Connector Female		4
18	1G-180-00-019	Upper suspension pin		1
19	AGFR245-0100-00	Suspension frame		1
20	DIN985-M30X2	Locking nutM30x2		5
21	EFAGF140.106	Short pin		1
22	200.56.011	Lock pin		5
23	EFAG140.014A-1	Below suspension pin (AG200/220/250)		3

GEO Italy S.R.L.

Via G. Abbate, 215, 14054 Castagnole delle Lanze AT

Page 9

Pos	Code	Description	NOTE	Q.
24	EFAGF140.030	Movable suspension frame		1
25	EFAGF200.218-N	Safety pin		1
26	AGFR245-0000-14	Fixing pin 1		1
27	AGFR245-0500-00	Horizontal swing seat		1
28	SF-2-40X44X50	Self lubricating bearing		8
29	EFAGF140.021-N	Translation cylinder		1
30	AGFR245-0600-00	Rear swing arm (200-240)		1
30	EFAGF140.019	Rear swing arm(140-180)		1
31	GB5782-M24x100	Half thread bolt-M24x100		2
32	DIN985-M24	nut m24		3
33	EFAGF140.101	Long pin		4
34	GB5783-M14x45	Bolt M14X45		4
35	AGFR245-1200-00	Front swing arm (200-240)		1
35	EFAGF140.018	Front swing arm(140-180)		1
36	EFAGF200.236-N	Spacer bush		1
37	EFAGF140.107A	Push plate		2
38	EFAGF140.024	Side sway cylinder		1
39	EFAGF140.102	Clamping block		1
39	EFAGF140.102A	Locking plate		1
40	EFAGF140.103A	washer(Ø45*Ø13)		1
41	EFAGF200.235-N	Spacer pad		1
42	GB5782-M24x150	Half thread bolt M24x150		1
43	AGFR245-0000-02	Transportation fixing pin 1		1
44	GB5782-M24X120	Half thread bolt M24		1
45	GB97.1-24	Plain washer 24		1



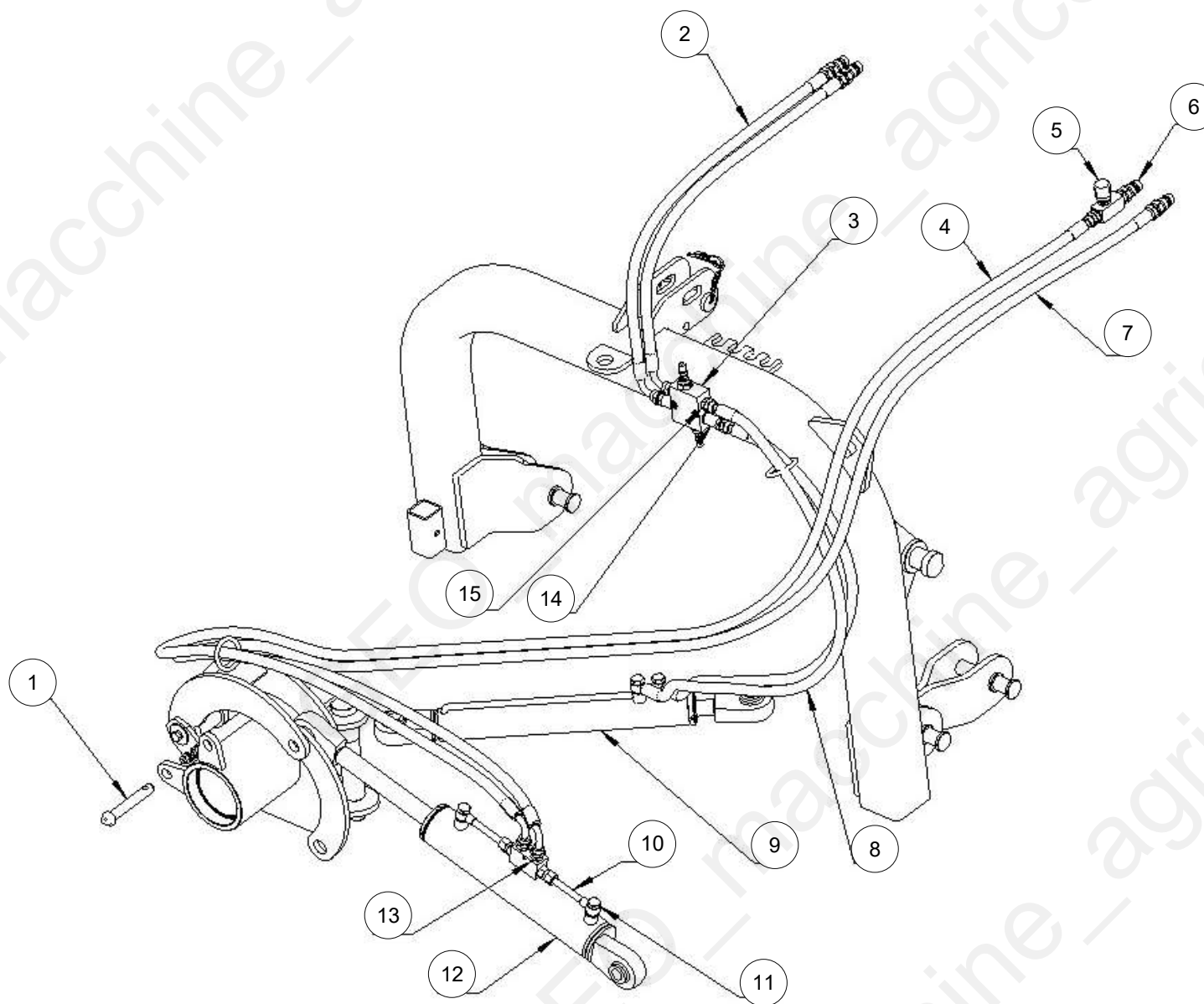
Pos	Code	Description	NOTE	Q.
1	GB1152-M10X1	Grease Nipple M10x1		1
2	GB5783-M8x30	bolt M8X30		6
3	GB93-8	Spring washer 8		6
4	GB97.1-8	Plain washer 8		6
5	VM190.163-N	bearing seat nipple cap		1
6	GB5783-M12x45	Bolt M12X45		8
7	AGFR245-0000-11	Left bearing seat		1
8	GB97.1-12	plain washer 12		15
9	GB894.1-45	Check ring		1
10	DIN985-M16X1.5	Locking Nut M16x1.5		20
11	EFAG.140.103	Hammer AG 16,5		20
12	EFAG140.190	Bolt for hammer(M16X1.5X92)		20
13	CFW-65X100X10	FB oil seal 65X100X10		1
14	GB893.1-100	Circlip 100		1
15	GB281-1309	Self-aligning ball bearing		2
16	VM190.111-N	Right bearing seat		1
17	GB93-12	spring washer 12		7
18	GB5783-M12x30	Bolt M12X30		7
19	CFW-45X80X8	FB oil seal 45X80X8		1
20	VM140.017A	Blade shaft(140)(L=1325)		1
20	VM160.017A	Blade shaft (160)(L=1525)		1
20	VM180.017A	Blade shaft (180)(L=1725)		1
20	VM200.017A	Blade shaft (200)(L=1925)		1
20	VM220.017A	Blade shaft (220)(L=2125)		1
21	DIN985-M12	nut M12		8

Machine: AGFN

Assembly: AGFN_parte 3



Pos	Code	Description	NOTE	Q.
22	CFW-65X90X10	FB oil seal 65X90X10		1

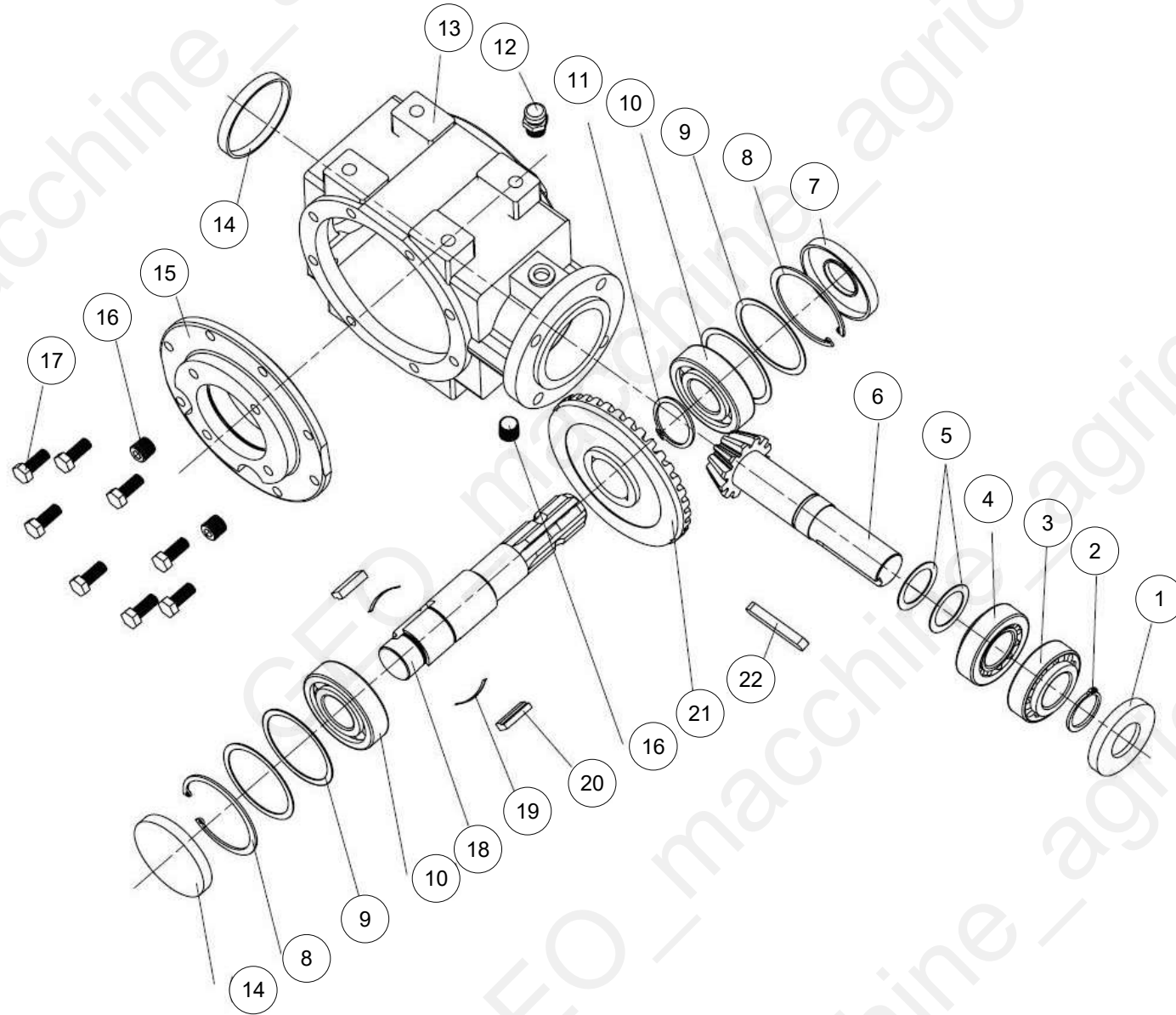


Machine: AGFN

Assembly: AGFN_parte 4



Pos	Code	Description	NOTE	Q.
1	AGFR245-0000-02	Transportation fixing pin 1		1
2	EFAGF140.022A	pipeline(L=2000)		2
3	VAU-G3/8-B	Both way flow valve		1
4	EFAGF140.023J	Pipe line(L=3600)		1
5	FV10-1-10/2-G3/8	Flow control valve (3/8)		1
6	QUICK-COUPLING-G1/2-I	Quick jointG1/2		4
7	EFAGF140.023A	Pipe line(L=3600)		1
8	EFAGF140.020A-N	Short pipe line(L=1300)		2
9	EFAGF140.021-N	Translation cylinder		1
10	AGF140.089	AGF steel pipe (RL-12/NL-18&12)		2
11	GB3541-M16X1.5	hinge joint bolt M16X1.5		4
12	EFAGF140.024	Side sway cylinder		1
13	VRDD-G3/8-12L-A	Bothway lock pin		1
14	LSP-18T-205	Long joint		2
15	1CB-18-06WD	Joint M18X1.5-G3/8		2

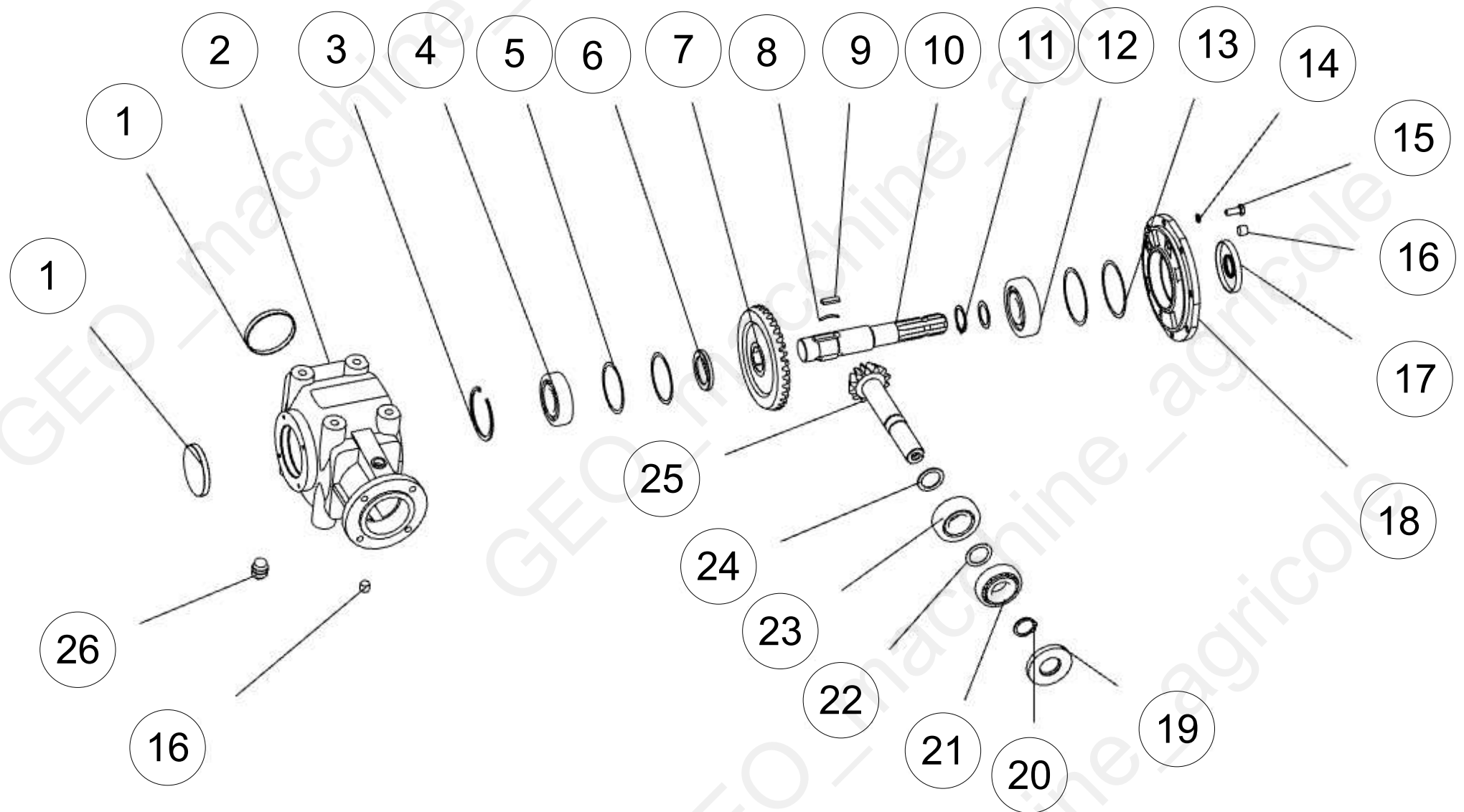


Machine: AGFN

Assembly: AGFN_gearbox140-180



Pos	Code	Description	NOTE	Q.
1	CFW-35X72X10	FB oil seal 35X72X10		1
2	JB4342-35	Check ring 35		1
3	GB297-30207	Conical roller bearing 30207		1
4	GB297-32207	Conical roller bearing 32207		1
5	TZDP-48-35-1	48X35X1 adjusting shim		2
6	AG14.01.C01	Output shaft gear		1
7	CFW-35X80X10	FB oil seal 35X80X10		1
8	GB893.1-80	Seeger ring 80		2
9	TZDP-80-70-1	Adjusting shim80X70X1		4
10	GB276-6307	Bearing 6307		2
11	GB894.1-42	Check ring 42		1
12	CBW-00-011B	breath plug 3/8		1
13	AG14.01.C02-884	311 shell		1
14	NFG-RCA-80X10	Blanking cap 80X10		2
15	AG14.01.C03	311 shell cap		1
16	ZBT32001.3-ZG3/8-19"	ZG3/8-19 cap plug		3
17	GB5783-M10X25	Bolt M10X25		8
18	GF140.01.C04	Input shaft		1
19	AG14.01.C07	Leaf spring		2
20	AG14.01.C06	key		2
21	AG14.01.C05A	Main gear		1
22	GB1096-79/10X65	Key 10X65		1



Pos	Code	Description	NOTE	Q.
1	NFG-RCA-90X10	Cap 90X10		2
2	AG20.01.C02	311 shell		1
3	GB893.1-90	Circlip 90		1
4	GB276-6308	Bearing 6308		1
5	TZDP-90-79-0.4	Adjusting shim 90X79X0.4		2
6	1J-180-053.02	Shim 56X42X3		1
7	AGFR245-0300-02	Bevel gear wheel		1
8	AG14.01.C07	Leaf spring		3
9	AG14.01.C06	key		3
10	AGFR245-0300-01	Spline shaft 1		1
11	GB894.1-42	Check ring 42		1
12	GB276-6407	Deep groove ball bearing 6407		1
13	TZDP-100-89-0.4	Adjusting shim 100X89X0.4		2
14	GB93-10	spring washer 10		8
15	GB5783-M10X25	Bolt M10X25		8
16	ZBT32001.3-ZG3/8-19"	ZG3/8-19 cap plug		3
17	CFW-35X90X10	FB oil seal 35X90X10		1
18	AG20.01.C03	311 shell		1
19	CFW-35X80X10	FB oil seal 35X80X10		1
20	JB4342-35	Check ring 35		1
21	GB297-30307	Tapered roller bearing 30307		1
22	TZDP-48-35-1	48X35X1 adjusting shim		2
23	GB297-32307	Tapered roller bearing 32307		1
24	TZDP-48-35-2	48X35X2 adjusting shim		1
25	AG20.01.C01	Out-put shaft		1

Machine: AGFN

Assembly: AGFN_gearbox200-220



Pos	Code	Description	NOTE	Q.
26	CBW-00-011B	breath plug 3/8		1