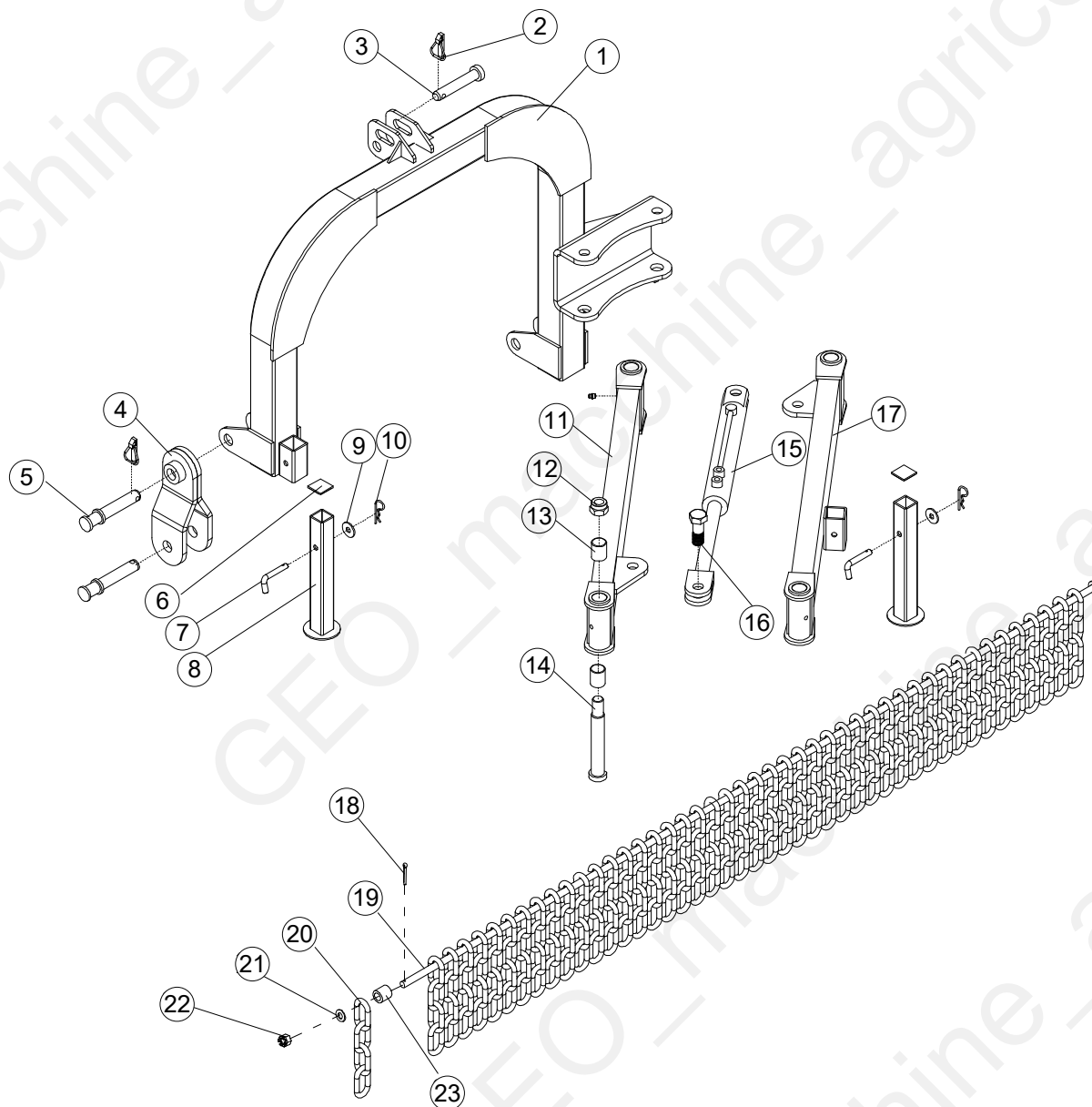


AGD



Table of Contents

Tavola	Page
AGD_Part1	3
AGD_Part2	5
AGD_Part3	8
AGD_Part4	11

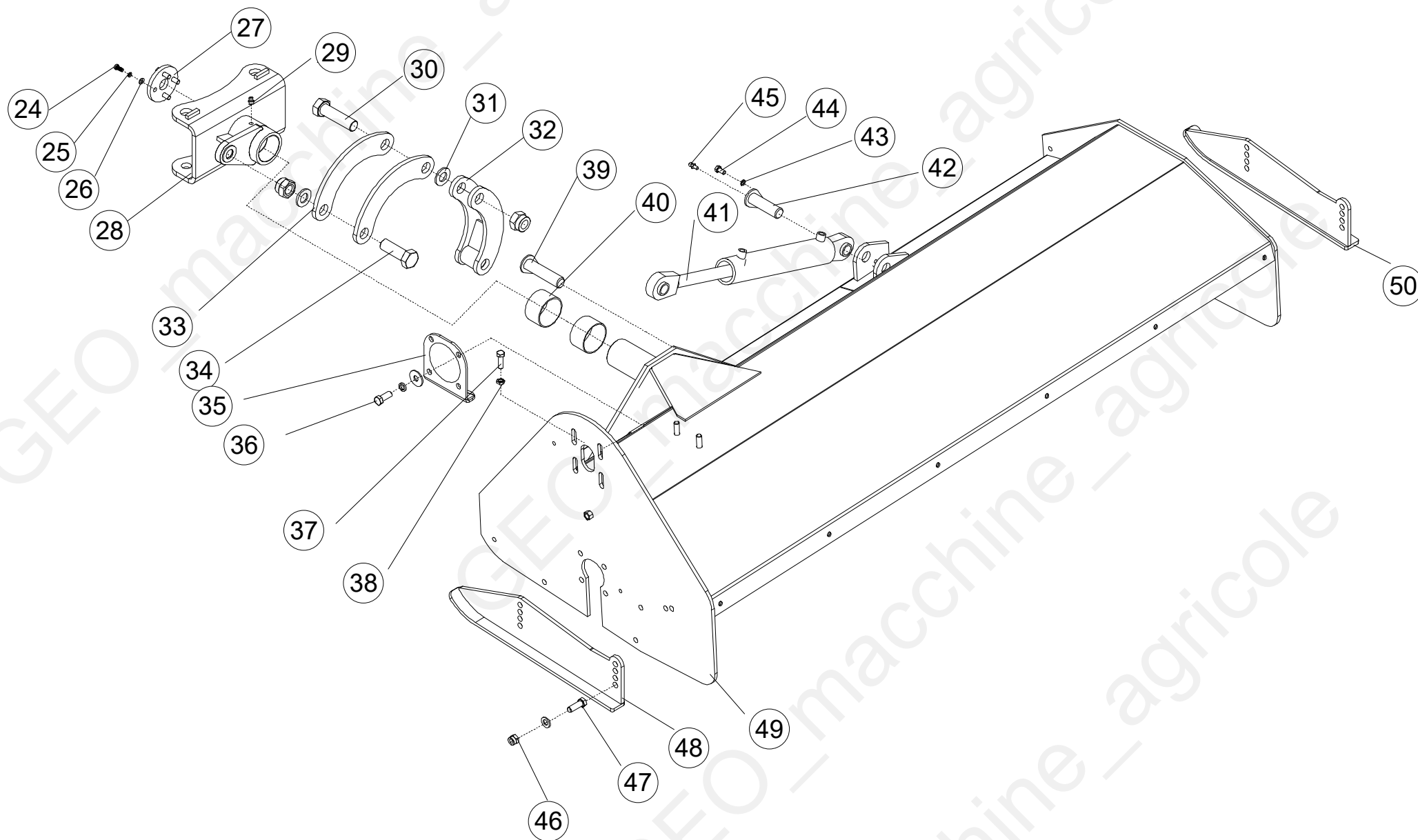


Machine: AGD

Assembly: AGD_Part1



Pos	Code	Description	NOTE	Q.
1	AGD175.011A	Hanging weldment		1
2	FEL300.111	Lock pin 12		4
3	AGF140.109	Pin shaft		1
4	AGD175.031A	Small Hanging weldment		1
5	AGF140.210	Pin for lifting		3
6	AGF140.108	Plastic cover		2
7	1G135.00.107	Plug Pin		2
8	AGF140.011	Supporting frame (S)		2
9	GB/T96.2-2002	Plain washer 12		2
10	EFGC125.110	R Pin 3.2		2
11	AGD175.019A	Front swinging arm		1
12	GB/T889.1-86	Nut M24		7
13	SF-2	Bushing 30X34X40		8
14	AGL125.105	Pin (L)		4
15	AGD175.018A	Parallel movement cylinder		1
16	GB/T5783-86	Bolt M24X65		1
17	AGD175.017A	Rear swinging arm		1
18	GB/T 91-2000	Cotter pin 2.5*25		1
19	EFGC155.025	Shaft for chain 155		1
19	EFGC175.025	Shaft for chain 175		1
20	AGF140.030	Chain units		75
21	GB/T97.1-2002	Flat mat 8		5
22	GB/T 6178-1986	Nut M8		1
23	AGF140.111	Sleeve of chain		75



Machine: AGD

Assembly: AGD_Part2



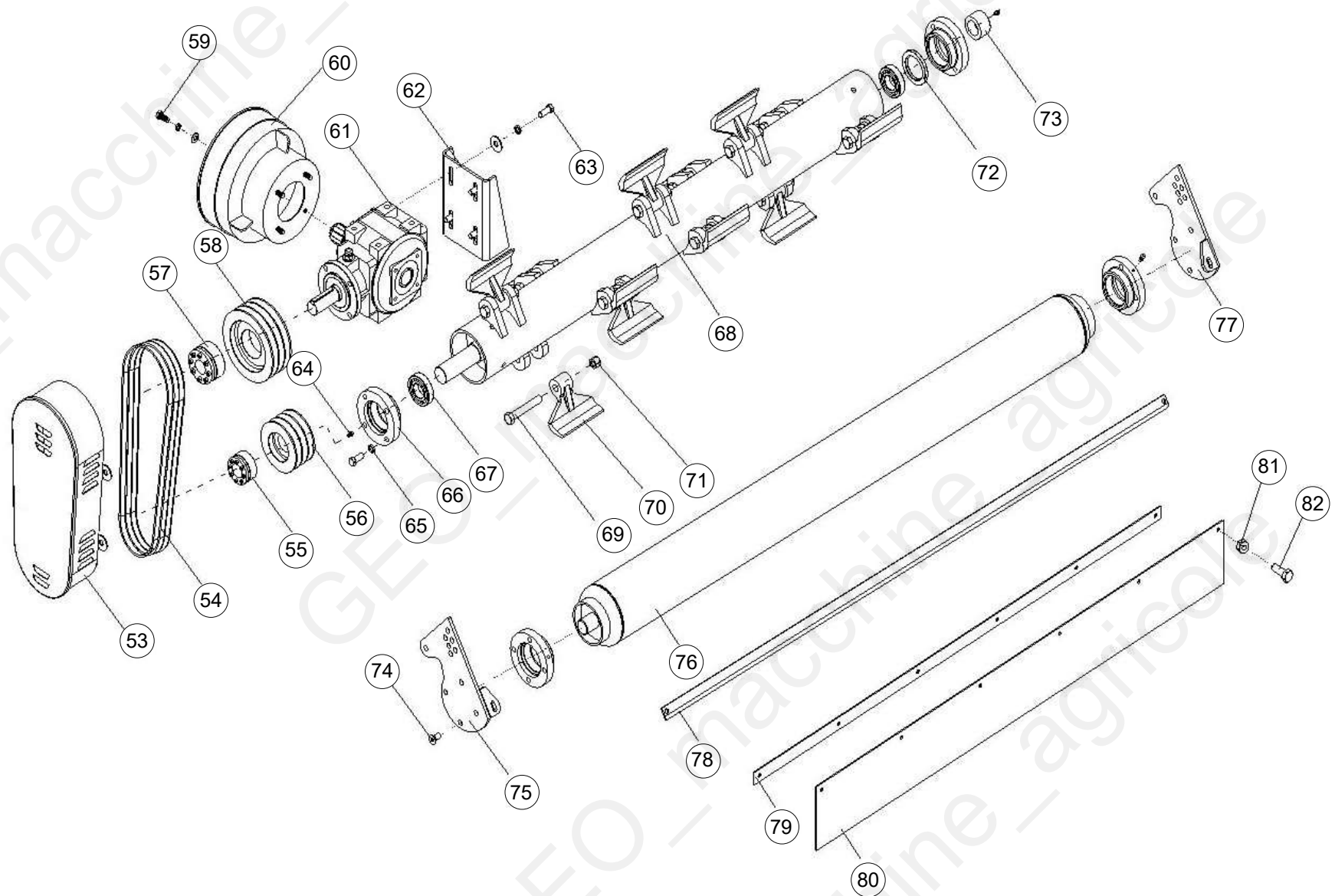
Pos	Code	Description	NOTE	Q.
24	GB/T5783-86	Bolt M24X65		4
25	GB/T93-87	Spring washer 12		8
26	GB/T97.1-86	Plain washe10		8
27	AGL125.101	Cover		1
28	AGD175.020A	Rotating shaft		1
29	GB/T1152-89	Oil cup		5
30	GB/T5783-86	Bolt M24X65		1
31	GB/T97.1-86	Plain washe10		2
32	AGL125.021	The push plate		1
33	AGL125.102	Pull pedal		2
34	GB/T5783-86	Bolt M24X65		1
35	AGL125.014	Tension plate welded parts		1
36	GB/T5786-2000	Bolt M12X35		4
37	GB/T5783-86	Bolt M24X65		2
38	GB/T6172-86	Nut M12		2
39	SL204.01.103	Pin		1
40	SF-2	Bushing 30X34X40		2
41	AGD175.016A	Side sway cylinder		1
42	SL204.01.102	Pin (L)		1
43	GB/T93-87	Spring washer 12		6
44	GB/T5783-86	Bolt M24X65		2
45	GB/T1152-89	Oil cup		4
46	GB/T889.1-86	Nut M24		8
47	GB/T5783-86	Bolt M24X65		20
48	DP175.014	Base plate (L)		1

Machine: AGD

Assembly: AGD_Part2



Pos	Code	Description	NOTE	Q.
49	AGD155.013A	The cover weldment 155		1
49	AGD175.013A	The cover weldment 175		1
50	DP175.015	Base plate (R)		1



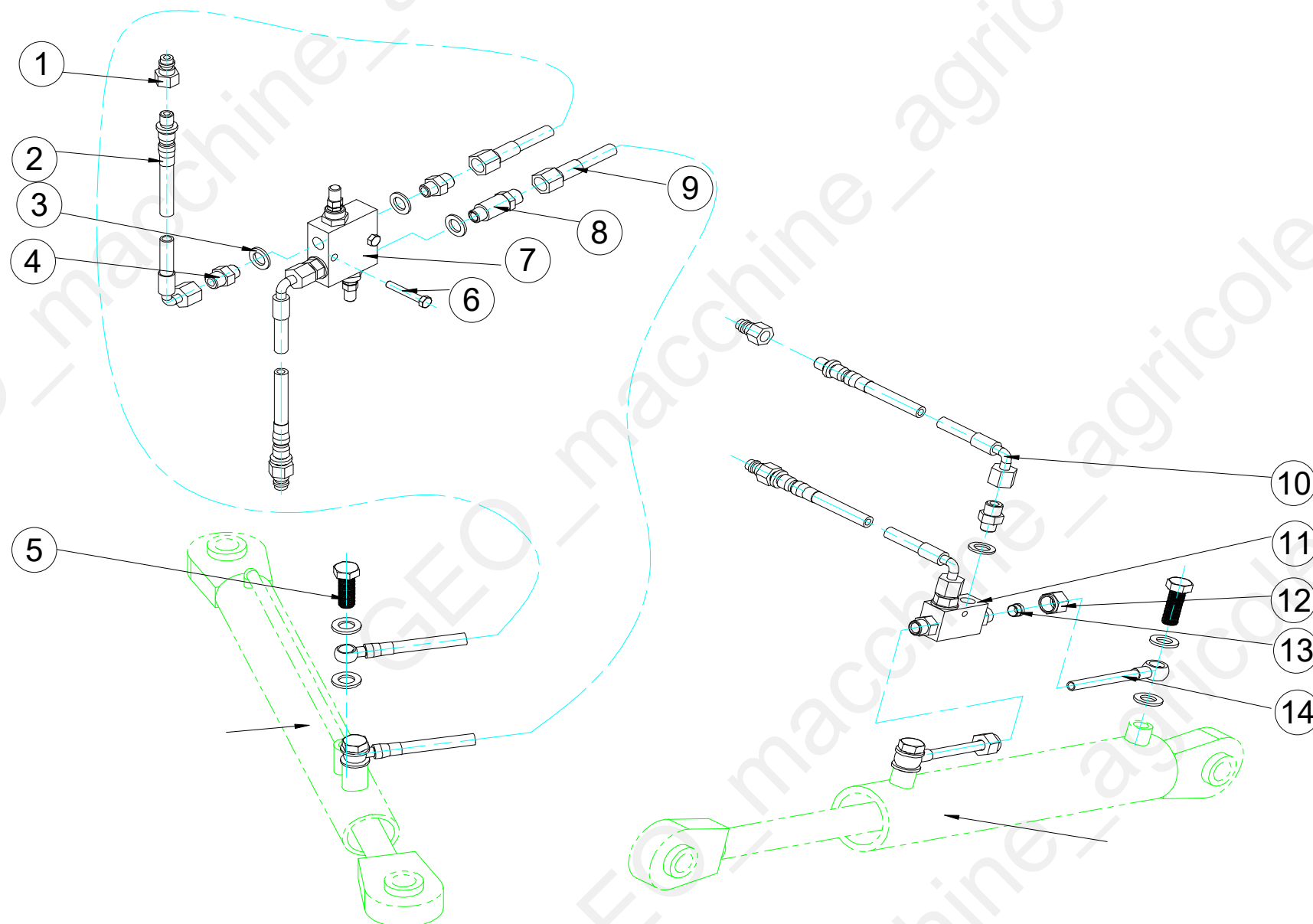
Pos	Code	Description	NOTE	Q.
51	GB/T5782-86	Bolt M12X130		1
52	GB/T96.2-2002	Plain washer 12		9
53	GEO.500.12	GEO BELT COVER 500H 12cm		1
54	GB/1154-17.39-5	BELT B 39 1/2 (1000Li)		4
55	JB/T7934Z3	Swllable sleeve		1
56	EFG120.105.4	small belt pulley 120mm 4 grooves		1
57	JB/T7934Z3	Swllable sleeve		1
58	EFG120.106.4	Big belt pulley 170mm 4 grooves		1
59	GB/T5783-2000	Bolt		4
60	FM150.120	Guard shade		1
61	XH50.300Z.02W	Gearbox assembly		1
62	AGL125.015	Skid		1
63	GB/T5783-2000	Bolt		4
64	GB/T1152-89	Oil cup		2
65	GB/T93-87	Spring washer 12		16
66	EFGC125.115	Flange Bearing UC 207		4
67	UC207	Bearing UC207		4
68	EFGC155.018	Blade axle weldment 155		1
68	EFGC175.018	Blade axle weldment 175		1
69	GB/T5785-86	Bolt M16X1.5X90		28
70	EFGC.100.00.107	Hammer Ø16mm		28
71	GB/T889.2-2000	Locking nut M16X1.5		28
72	GB/T13871-94	Oil seal		1
73	RK120.109.4	Spacer lower for Pulley 4 grooves		1
74	GB/T70.3-2000	Hex.head bolt M12X30		8

Machine: AGD

Assembly: AGD_Part3



Pos	Code	Description	NOTE	Q.
75	DP175.019	Supporting for roller (R)		1
76	DP155.020	Roller weldment 155		1
76	DP175.020	Roller weldment 175		1
77	DP175.018.01	Supporting for roller (L)		1
78	DP155.102	Mud shield 155		1
78	DP175.102	Mud shield 175		1
79	DP155.106	Press plate 155		1
79	DP175.106	Press plate 175		1
80	DP155.105	Rubber plate 155		1
80	DP175.105	Rubber plate 175		1
81	GB/T6184-86	Locking nut M10		8
82	GB/T5783-86	Bolt M24X65		8



Machine: AGD

Assembly: AGD_Part4



Pos	Code	Description	NOTE	Q.
1	EFGCH125.013	Quick connector R1/2"		4
2	AGF140.041	Oil pipe		2
3	JB/T 982-1977	Seal washer 16		14
4	AGF140.401	Short Adaptor		5
5	GB/T 3451-83	Bolt M16X1.5X45		4
6	GB/T 5782-2000	Bolt M8X40		2
7	AGF140.042	Valve		1
8	AGF140.402	Long Adaptor		1
9	AGF140.043	Oil pipe		2
10	AGF140.044	Oil pipe		2
11	AGF140.046	Valve		1
12	AGF140.403	Nut		2
13	AGF140.404	Bushing		2
14	AGF140.045	Adaptor weldment		2