

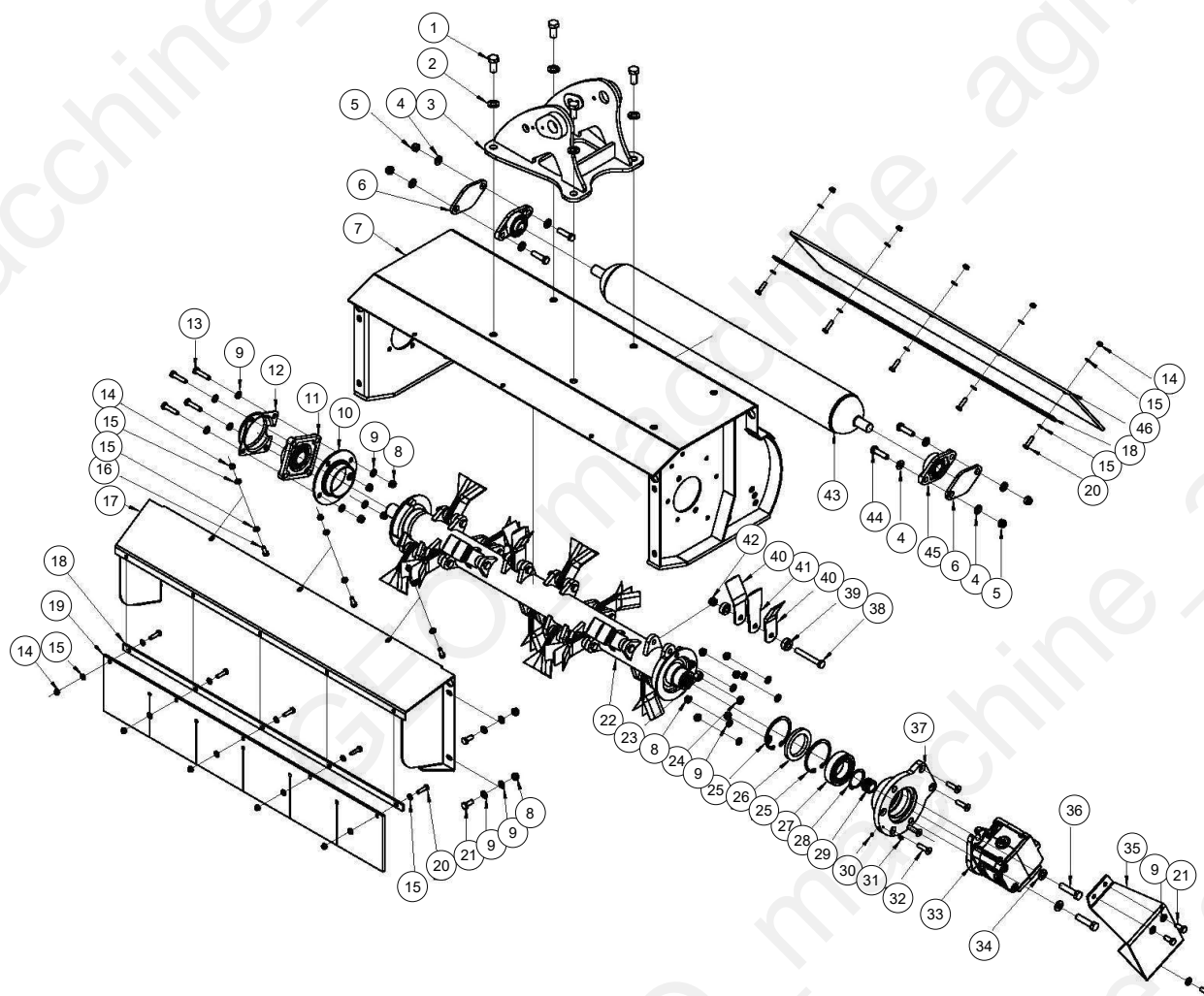
AM125



GEO Italy S.R.L.

Table of Contents

Tavola	Page
AM125_parte 1	3
AM125_parte 2	7
AM125_parte 3	11
AM125_parte 4	15



Pos	Code	Description	NOTE	Q.
1	GB5783-M16.x.35	full screwed bolt		4
2	GB97.1-16	Plain washer 16		4
3	FHM46-0101-00	linkage frame weldment		1
4	GB97.1-12	plain washer 12		8
5	DIN985-M12	nut M12		4
6	FHM46-0100-12	bearing base plate		2
7	FHM46-0103-100	hood weldment 100		1
7	FHM46-0103-80	hood weldment 80		1
8	DIN985-M10	Locking nut M10		15
9	GB97.1-10	PLAIN WASHER 10		26
10	FHM46-0100-03	second bearing seat		1
11	UCF207	BEARING SEAT UCF207 SQUARED		1
12	FHM46-0100-02	end cap		1
13	GB5783-M10x45	Bolt M10X45		4
14	DIN985-M8	nut M8		13
15	GB97.1-8	Plain washer 8		26
16	GB5783-M8x25	bolt M8X25		3
17	FHM46-0100-00	shaft 100		1
17	FHM46-080-00	board weldment 80		1
18	FHM46-0100-11	pressure bar 100	(L=1045)	2
18	FHM46-080-11	pressure bar 80		1
19	FHM46-0100-10	rubber board 100		1
19	FHM46-080-10	rubber board 80		1
20	GB5783-M8x30	bolt M8X30		10
21	GB5783-M10x25	Bolt M10X25		7

Machine: AM125

Assembly: AM125_parte 1



Pos	Code	Description	NOTE	Q.
22	FHM46-0080-00	shaft 80		1
22	FHM46-0100-00	shaft 100		1
23	GB6170-M14	Nut 14		2
24	GB93-14	spring washer 14		2
25	GB893.1-90	Circlip 90		2
26	GB13871-FB-60X90X10	FB oil seal		1
27	GB288-22210-C	self-aligning roller bearing		1
28	GB894.1-50	A shaft check ring		1
29	FHM46-0100-08	spline housing		1
30	GB77-M6X6	inner hexagon set screw		1
31	GB1152-M6	Grease Nipple M6		1
32	GB70.3-M10X40	inner hexagon sunk screw		4
33	KM30.22.L0-83K9	hydraulic motor		1
34	GB97.1-14	Plain washer 14		2
35	FHM46-0100-07	motor protection plate		1
36	GB5783-M14x60	full screw bolt		2
37	FHM46-0100-01	spline seat		1
38	GB5782-M12x90	Bolt M12x90		16
39	FHM46-0100-04	cushion block		32
40	FHM46-0100-06	bend blade		32
41	FHM46-0100-05	straight blade		16
42	DIN985-M12	nut M12		16
43	FHM46-0105-100	Roller weldment 100		1
43	FHM46-0105-80	Roller weldment 80		1
44	GB5782-M12x45	Bolt M12x45		4

GEO Italy S.R.L.

Via G. Abbate, 215, 14054 Castagnole delle Lanze AT

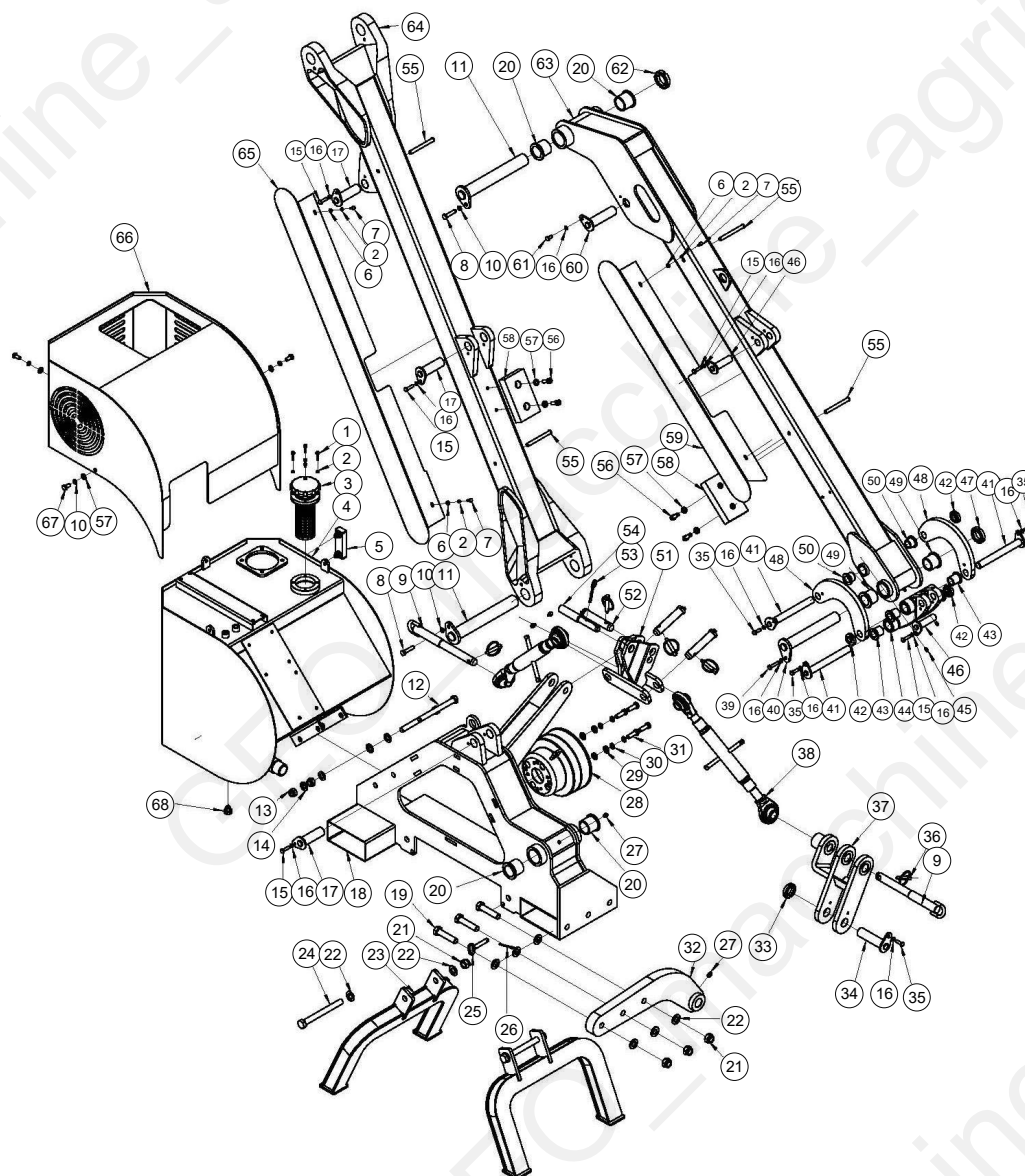
Page 5

Machine: AM125

Assembly: AM125_parte 1



Pos	Code	Description	NOTE	Q.
45	UCFL205	bearing		2
46	FHM46-0100-100	rubber board 100		1
46	FHM46-0100-80	rubber board 80		1



Pos	Code	Description	NOTE	Q.
1	GB5783-M6X25	bolt M6X25		4
2	GB93-6	spring washer 6		12
3	4TJ140-1200-01	hydraulic oil tank filter		1
4	FHM46-0213-00	oil tank		1
5	JB7941.2-B80	(YWZ-80T) Oil level		1
6	GB97.1-6	Plain washer 6		8
7	GB5783-M6X16	bolt M6X16		8
8	GB5783-M10X45	Bolt M10X45		2
9	FHM46-0216-00	below linkage pin shaft		2
10	GB93-10	spring washer 10		2
11	FHM46-0201-00	big boom pin shaft		2
12	GB5782-M16X160	half screw bolt		2
13	DIN985-M16	Locking Nut M16		2
14	GB97.1-16	Plain washer 16		4
15	GB5783-M8X30	bolt M8X30		5
16	GB93-8	Spring washer 8		11
17	FHM46-0214-00	big boom cylinder pin shaft		3
18	FHM46-0207-00	bed frame		1
19	GB5783-M18X80	full screw bolt		3
20	FHM46-0200-07	shaft sleeve		4
21	DIN985-M18	Locking Nut M18		5
22	GB97.1-18	Plain washer 18		10
23	FHM46-0212-00	supporting leg		2
24	GB5782-M18X180	half screw bolt		2
25	FHM46-0211-00	leg brace pin shaft		2

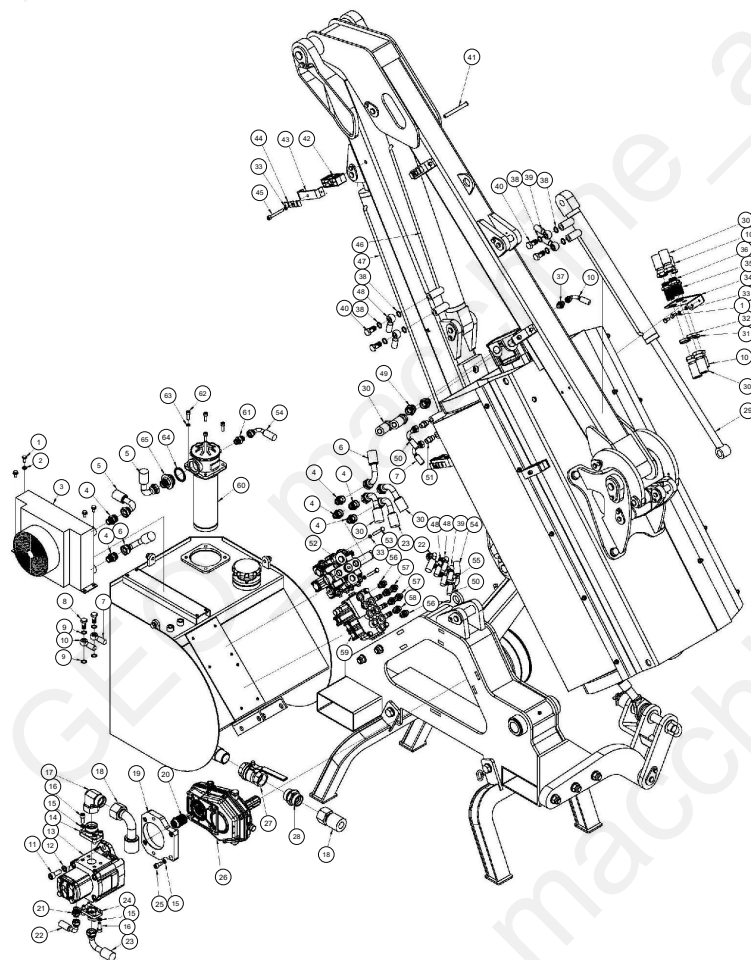
Pos	Code	Description	NOTE	Q.
26	1G-150-01-142S	small R pin		2
27	GB1152-M10X1	Grease Nipple M10x1		5
28	FM120.00.199D	PTO COVER		1
29	GB97.1-12	plain washer 12		4
30	GB93-12	spring washer 12		4
31	GB5783-M12X35	Bolt M12X35		4
32	FHM46-0208-00	connecting lever		1
33	1G-150.01.131C	M30X1.5 lock round nut		1
34	FHM46-0209-00	lifting ear pin shaft		1
35	GB5783-M8X25	bolt M8X25		4
36	200.56.011	Lock pin		5
37	FHM46-0210-00	lifting ear		1
38	FHM46-0217-00	adjusting pull rod		2
39	GB5783-M8X40	bolt M8X40		1
40	FHM46-0206-00	hitch frame pin shaft		1
41	FHM46-0205-00	arm plate pin shaft		3
42	FSLU-M22X1.5	nylon lock round nut		3
43	FHM46-0200-13	push rod seat shaft sleeve		4
44	FHM46-0200-05	push rod		1
45	GB1152-M6	Grease Nipple M6		2
46	FHM46-0204-00	cylinder pin shaft		2
47	FSLU-M35X1.5	M35X1.5 round nut		1
48	FHM46-0200-03	arm plate		2
49	FHM46-0200-04	shaft sleeve 1		2
50	FHM46-0200-14	shaft sleeve 2		2

Machine: AM125

Assembly: AM125_parte 2



Pos	Code	Description	NOTE	Q.
51	FHM46-0218-00	linkage frame		1
52	FHM46-0200-11	side plate pin shaft		3
53	ZL-25.104	R pin		1
54	FHM46-0200-12	hitch pin shaft		1
55	FHM46-0200-08	hold-down nut		4
56	GB70.1-M10X30	Bolt M10x30		4
57	GB97.1-10	PLAIN WASHER 10		4
58	FHM46-0200-02	limited block		2
59	FHM46-0200-01	oil tube cover 2		1
60	FHM46-0202-00	small arm pin shaft		1
61	GB5783-M8X16	bolt M8X16		1
62	FSLU-M40X1.5	nylon lock round nut		2
63	FHM46-0203-00	small arm		1
64	FHM46-0215-00	big arm		1
65	FHM46-0200-06	oil tube cover 1		1
66	FHM46-0220-00	oil tank cover		1
67	GB5783-M10X20	Bolt M10x20		3
68	CBW-00.015	Drain plug		1



Pos	Code	Description	NOTE	Q.
1	GB5783-M8X16	bolt M8X16		6
2	GB97.1-8	Plain washer 8		4
3	F2086-DC12V	air cooling		1
4	1DB-30-08WD	M30×2-G1/2 transition connector		6
5	FHM46-0319-00	radiator to oil filter tube		1
6	FHM46-0318-00	single valve to radiator tube		1
7	FHM46-0314-00	big arm oil return tube		1
8	GB3541-M14X1.5	hinge joint bolt M14X1.5		2
9	TDQ-14	copper washer		4
10	FHM46-0312-00	motor oil return transition tube		1
11	GB70.1-M14X35	inner hexagon socket cap screw		2
12	GB93-14	spring washer 14		2
13	7991004W	oil pump		1
14	FHM46-0317-02	oil pump oil inlet connector		1
15	GB93-14	spring washer 14		12
16	GB70.1-M10X25	Bolt M10x25		8
17	2C9-45W	M45X2 bend		1
18	FHM46A-0304-00	pump to oil tank tube		1
19	FHM46-0317-01	connecting plate		1
20	FHM46-0317-04	spline housing		1
21	1CO-18-10	M18X1.5-7/8X14 transition connector		1
22	FHM46-0308-00	multiple-way valve to pump oil tube		1
23	FHM46-0306-00	single-way valve to pump oil tube		1
24	FHM46-0317-03	oil pump oil exit connector		1
25	GB70.1-M10X20	Bolt M10X20		4

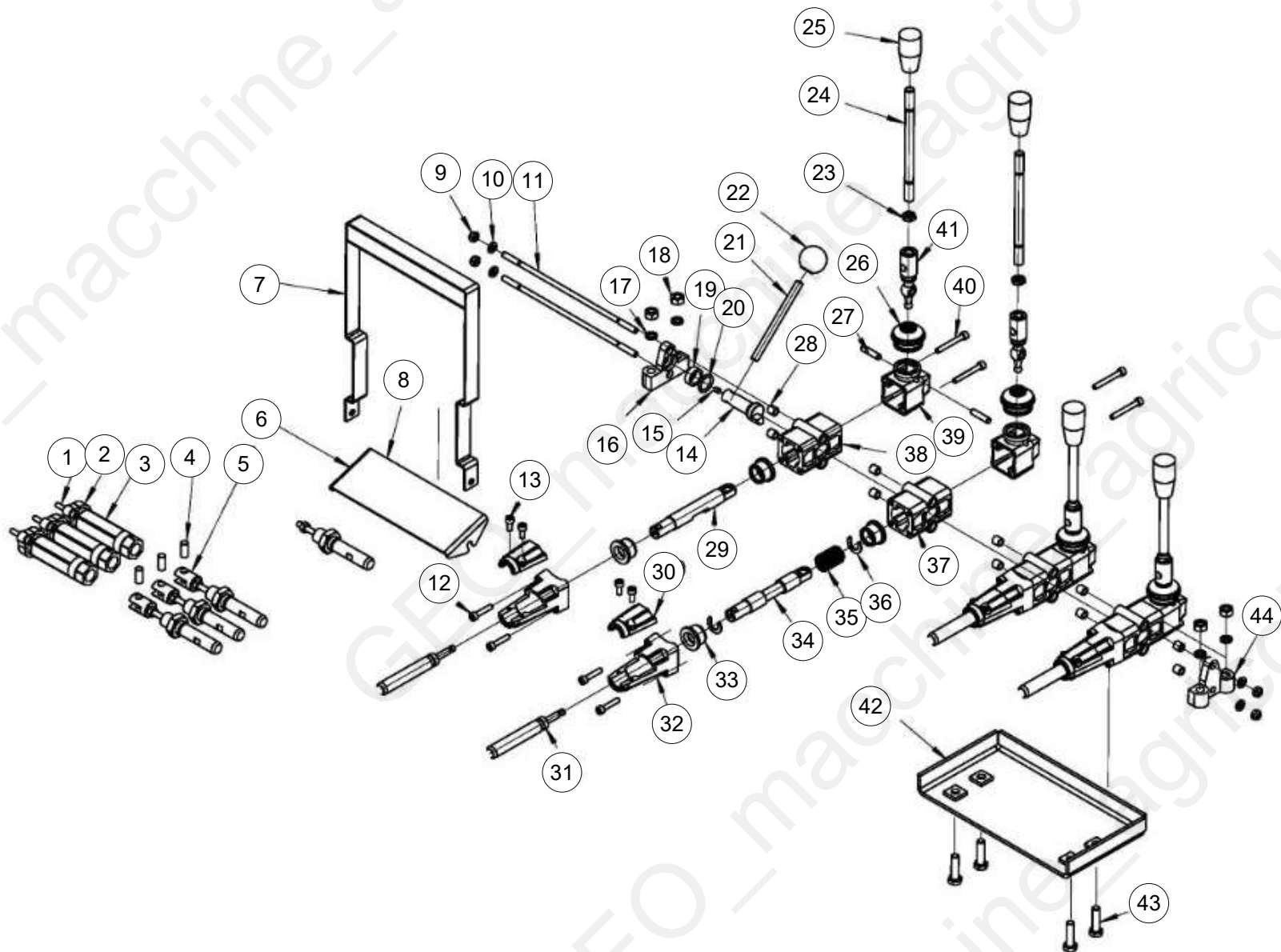
Pos	Code	Description	NOTE	Q.
26	70001-4	set-up gear box		1
27	QF-G1.1/4	ball valve		1
28	1CT-45-20	1/4-M45×2 transition connector		1
29	FHM46-0303-00	oil cylinder		1
30	FHM46-0310-00	motor oil tube		2
31	GB6173-M14X1.5	Locking Nut M14x1.5		1
32	GB6173-M30X2	fin thread thin nut		2
33	GB93-8	Spring washer 8		11
34	FHM46-0300-01	junction plate		1
35	6C-14	M14×1.5 connector		1
36	6C-30	M30×2 connector		2
37	1CB-14-06WD	M14×1.5-G3/8 connector		1
38	TDQ-16	copper washer		8
39	FHM46-0307-00	oil cylinder tube		2
40	GB3541-M16X1.5	hinge joint bolt M16X1.5		4
41	FHM46-0200-08	hold-down nut		4
42	QHHTTPG-430	pipe clamp		5
43	FHM46-0300-03	pipe clamp bottom plate		4
44	FHM46-0300-04	small pipe clamp		4
45	GB70.1-M8X70	inner hexagon socket cap screw		3
46	FHM46-0302-00	small arm cylinder		1
47	FHM46-0301-00	big arm cylinder		1
48	FHM46-0311-00	small arm cylinder tube		2
49	1CB-30-12WD	M30×2-G3/4 transition connector		2
50	FHM46-0305-00	big arm cylinder		1

Machine: AM125

Assembly: AM125_parte 3



Pos	Code	Description	NOTE	Q.
51	1CM-16-14WD	M16×1.5-M14×1 transition connector		2
52	I08384_0	single-way valve		1
53	GB5782-M8X60	Bolt M8x60		5
54	FHM46A-0316-00	multiple-way valve to oil filter tube		1
55	G3/8(4B-06WD)	uter hexagon frame combination plug		1
56	1CB-18-06WD	Joint M18X1.5-G3/8		2
57	1CB-16-06WD	Joint M16X1.5-G3/8		4
58	MBH-8.08.305Y	Throttle connector		1
59	AM60.04.022Y	Triple way valve		1
60	RFA-160×30L	oil return filter		1
61	1CM-18WD	M18×1.5 adapter		1
62	GB70.1-M12X30	inner hexagon socket cap screw		4
63	GB93-12	spring washer 12		4
64	JB982-48	bonded washer		1
65	AM125.00.01	Filter Connection		1



Pos	Code	Description	NOTE	Q.
1	GB70.1-M5X20	Bolt M5X20		6
2	AM60.01.201	Cable connector		3
3	AM60.01.202	pressure connector		3
4	AM60.01.205	Pin		4
5	AM60.01.204	Lock connector		4
6	AM60.01.115	Sticker plate		1
7	FHM46-0402-00	hand shank supporting frame		1
8	FHM46-0400-01	sticker		1
9	DIN985-M6	Locking nut M6		4
10	GB97.1-6	Plain washer 6		4
11	AM60.01.101	Pin		2
12	GB70.1-M5X25	Bolt M5X25		8
13	GB70.1-M5X12	Bolt M5X20		8
14	AM60.01.106	Lock washer		1
15	GB78-M5X8	Bolt M5X8		1
16	AM60.01.105	fixing seat		1
17	GB93-8	Spring washer 8		4
18	GB6170-M8	Nut M8		4
19	AM60.01.104	O - ring		1
20	GB3452.1-G-16X2.65	Washer 16X2.65		1
21	AM60.01.107	lock joystick		1
22	AM60.04.092	Handle		1
23	GB6172.1-M10	Nut M10		4
24	MBH-6.08.108	Joy stick		4
25	BH-6.07.091	Small handle cap		4

Machine: AM125

Assembly: AM125_parte 4



Pos	Code	Description	NOTE	Q.
26	AM60.01.119	Cover		4
27	GB119.1-B-6X26	B6X26 PIN		4
28	AM60.01.103	Lock washer		10
29	AM60.01.118A	Pull pole		1
30	AM60.01.123A	Up cover		4
31	AM60.01.011A	Cable		4
32	AM60.01.112A	lower cover		4
33	AM60.01.109	flange sleeve		8
34	AM60.01.111A	Pull pole		3
35	AM60.01.110	Return spring		3
36	AM60.01.122	Circle		6
37	AM60.01.113	Shell Valve Piece		3
38	AM60.01.117	shell with pin hole		1
39	AM60.01.114	Up cover		4
40	GB70.1-M5X40	Bolt M5X40		8
41	AM60.01.120	Director		4
42	FHM46-0401-00	joystick cushion		1
43	GB70.2-M8X30	inner hexagon flat round head screw		4
44	AM60.01.102	fixing seat 1		1