

# STIGA

## SPR 255 (2019)

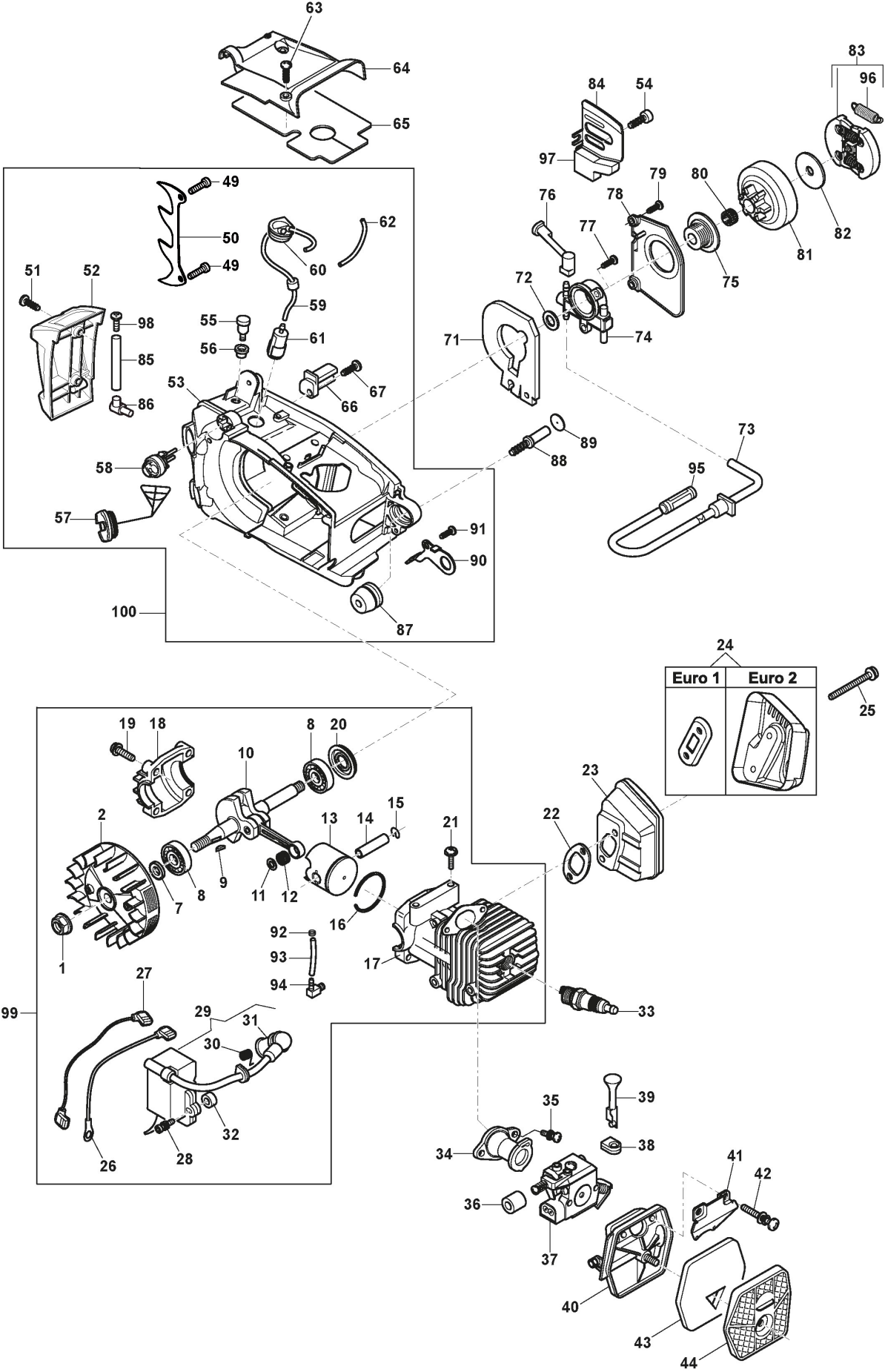
202510002/14



### **Spare parts list Reservdelar Repuestos Ersatzteile Pièces détachées Reserve onderdelen Catalogo ricambi**

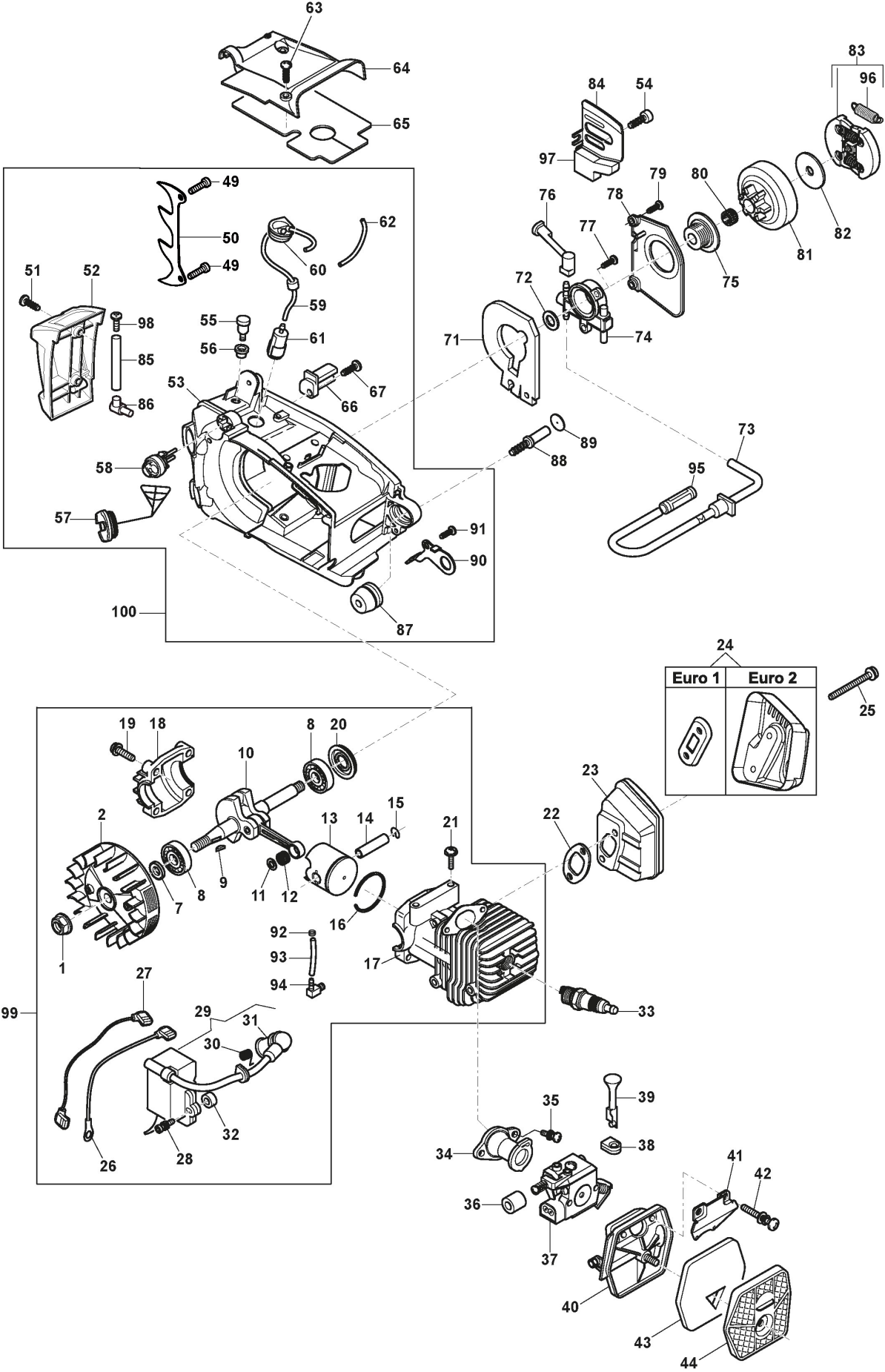
- Use ST. S.p.A. Genuine Spare Parts specified in the parts list for repair and/or replacement.
- The contents described in the parts list may change due to improvement.
- The drawings of the spare parts are only indicative And might Not represent the part in question exactly.
- The indications "right" - "left" - "front" - "rear" refer to the position of the operator when using the machine.
- When placing orders of parts for repair And/Or replacement, make sure that the illustrated parts list Is the one applying to the machine's year of manufacture, as shown on the identification plate attached to the machine.

All rights reserved. No part Of this material may be reproduced Or transmitted, in any form Or by any means, electronic Or mechanical, including photocopying, recording Or by any information storage And retrieval system, without permission in writing from ST. S.p.A.



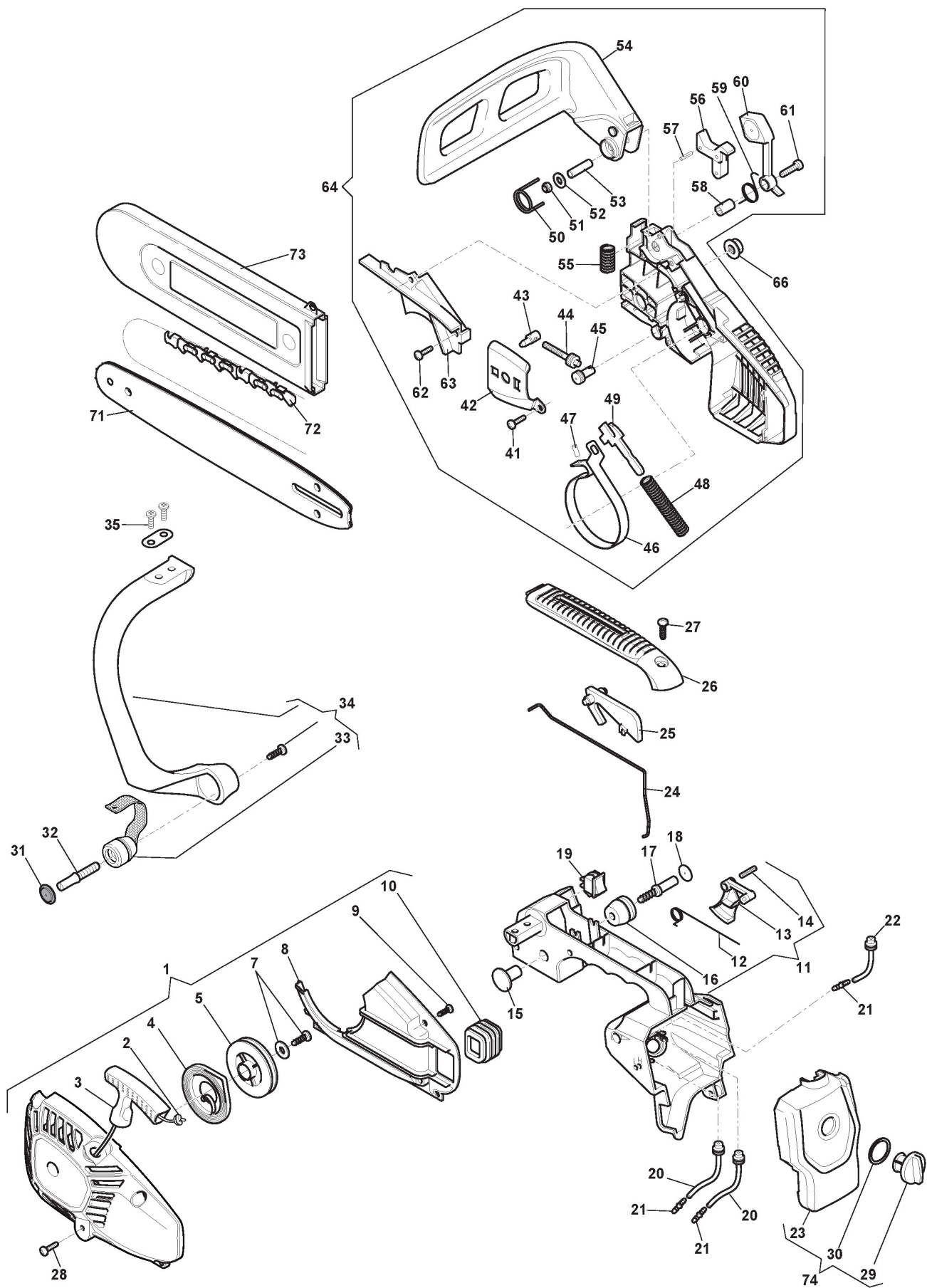
# Engine

Zn. c.	Množ.	Kód výrobku	Popis	Poznámky	From	Až do
1	1	123120008/0	Nut			
2	1	118802732/0	Flywheel	Euro-2;Until December 2018		
2	1	118805205/0	Flywheel Ass.Y	Euro-2;From Serial No. 19AC1CHA102285		
7	1	119035162/0	Seal Ring			
8	2	114215219/0	Ball Bearing			
9	1	118800959/0	Key			
10	1	123020030/0	Crankshaft			
11	2	123652505/0	Washer			
12	1	123235008/0	Needle Bearing			
13	1	123590012/0	Piston			
14	1	123760006/0	Piston Pin			
15	2	123202006/0	Circlip			
16	1	123204014/0	Piston Ring			
17	1	118802730/0	Cylinder Assy	Euro-2		
18	1	123082006/0	Stabilizer			
19	4	123878076/0	Screw			
20	1	119035163/0	Seal Ring			
21	4	123878081/0	Screw			
22	1	123280067/0	Muffler Gasket			
23	1	118802733/0	Muffler	Euro-2		
24	1	118804648/0	Muffler Cover	Euro-2		
25	2	123878078/0	Screw			
26	1	6995210	Earth Cable			
27	1	6995227	Stop Wire			
28	2	123878079/0	Screw			
29	1	118802731/0	Electronic Coil	Euro-2;Until December 2018		
29	1	118805204/0	Electronic Coil	Euro-2;From Serial No. 19AC1CHA102285		
30	1	6995022	Spark Plug Spring			
31	1	6995066	Spark Plug Cover			
32	2	123160063/0	Spacer			
33	1	3210024	Spark Plug			
34	1	123073516/0	Intake Manifold Assy			
35	2	123878077/0	Screw			
36	1	118801153/0	Sponge Gasket			
37	1	123054034/0	Carburetor			
38	1	123275025/0	Grommet Air-Lever			
39	1	123315093/0	Air Lever, Black			
40	1	118801588/0	Air Cleaner Base			
41	1	123543002/0	Plate			
42	2	123878086/0	Screw			
43	1	123220014/0	Air Filter			
44	1	118801589/0	Cleaner Cover			
49	2	123878122/0	Screw			
50	1	118550596/0	Spike			
51	2	123878008/0	Screw			
52	1	118801596/0	Front Cover, Yellow			
53	1	118802270/0	Crankase Ass.Y			



# Engine

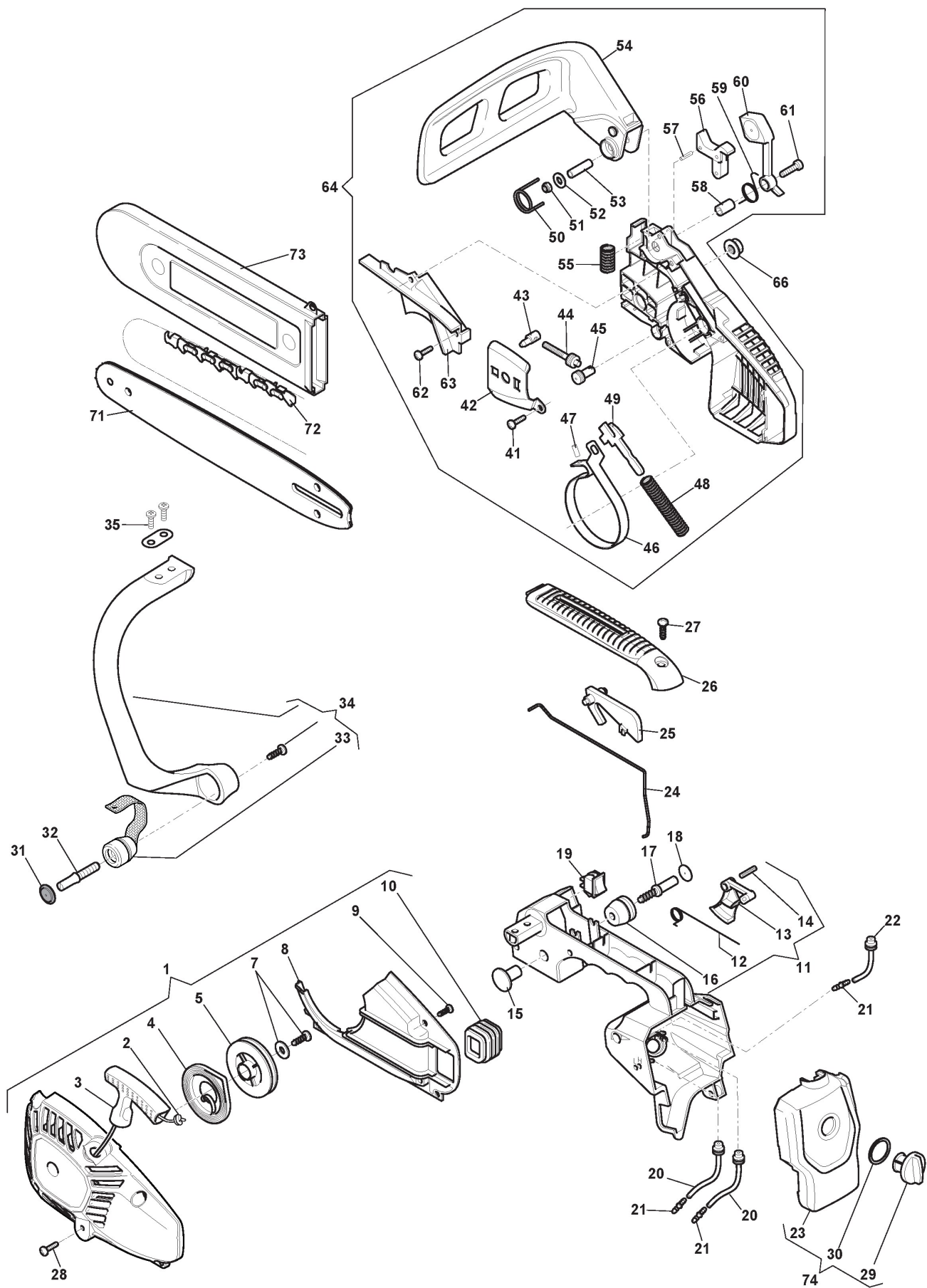
Zn. c.	Množ.	Kód výrobku	Popis	Poznámky	From	Až do
54	2	6995187	Screw			
55	1	183875003/0	Breather Valve Assy			
56	1	123275024/0	Grommet			
57	2	118804552/0	Cap Assy, Black			
58	1	118804231/0	Primer			
59	1	123867019/0	Pipe			
60	1	123650004/0	Grommet			
61	1	183520007/0	Fuel Pickup Assy			
62	1	118801532/0	Pipe			
63	2	123878082/0	Screw			
64	1	118801579/0	Upper Cover Yellow			
65	1	123600072/0	Guard			
66	1	123202007/0	Chain Guard			
67	1	123878093/0	Screw			
71	1	123600073/0	Gasket			
72	1	123652506/0	Washer			
73	1	123867020/0	Pipe			
74	1	183594508/0	Oil Pump Assy			
75	1	123878083/0	Screw			
76	1	123867024/0	Pipe			
77	2	123878084/0	Screw			
78	1	123109577/0	Cover Pump			
79	2	123878080/0	Screw			
80	1	123235009/0	Needle Bearing			
81	1	123050007/0	Clutch Drum Assy	10", 3/8		
82	1	123657011/0	Sprocket Washer			
83	1	183215008/0	Clutch Ass.Y			
84	1	123311009/0	Plate			
85	1	118800255/0	Pickup Oil			
86	1	118801162/0	Nozzle			
87	1	123275027/0	Shock Absorber			
88	1	123878093/0	Screw			
89	1	123790022/0	Cap			
90	1	123208412/0	Clamp			
91	1	123878080/0	Screw			
92	1	123206852/0	Fair Led			
93	1	123867018/0	Pipe			
94	1	118803594/0	Joint			
95	1	123220013/0	Fuel Pickup Assy			
96	1	123430593/0	Clutch Spring			
97	1	123600074/0	Guard			
98	1	112728524/0	Screw			
99	1	118804964/0	Engine Short Block	Only for Euro-2;Until December 2018		
99	1	118805206/0	Engine Short Block	Only for Euro-2;From Serial No. 19AC1CHA102285		
100	1	118804965/0	Base Components Assy			





## Housing

Zn. c.	Množ.	Kód výrobku	Popis	Poznámky	From	Až do
1	1	118801599/0	Starter Assy Yellow			
2	1	123234005/0	Starter Cord			
3	1	123300013/0	Starter Handle			
4	1	123430594/0	Starter Spring			
5	1	123604011/0	Starter Pulley			
7	1	123878087/0	Screw			
8	1	123107504/0	Air Conveyor			
9	1	123878088/0	Screw			
10	1	123275026/0	Grommet			
11	1	183300023/0	Handle Assy			
12	1	123430599/0	Spring			
13	1	123315095/0	Throttle Lever, Yellow			
14	1	123510098/0	Elastic Pin			
15	1	123790021/0	Cap			
16	1	123275027/0	Shock Absorber			
17	1	123878093/0	Screw			
18	1	123790022/0	Cap			
19	1	118800202/0	Switch	From 01-September-2017		
19	1	123303006/0	Switch	To 31-August-2017		
20	2	123867021/0	Pipe			
21	3	123650005/0	Pipe Connection			
22	1	123867022/0	Pipe Mix			
23	1	118801590/0	Rear Cover			
24	1	123835002/0	Throttle Rod			
25	1	123315096/0	Safety Lever, Yellow			
26	1	118801582/0	Handle Cover, Yellow			
27	1	123878008/0	Screw			
28	4	123878008/0	Screw			
29	1	123593507/0	Knob			
30	1	123657012/0	Washer			
31	1	123790022/0	Cap			
32	1	123878093/0	Screw			
33	1	123275027/0	Shock Absorber			
34	1	183105000/0	Handle			
35	1	123657014/0	Washer			
41	1	123878088/0	Screw			
42	1	123311010/0	Bar Plate			
43	1	123796008/0	Nut			
44	1	123878092/0	Screw			
45	1	123510097/0	Pin			
46	1	123448005/0	Brake Band			
47	1	123665004/0	Needle			
48	1	123430598/0	Brake Spring			
49	1	123315094/0	Lever			
50	1	123430595/0	Spring			
51	1	123120009/0	Nut			
52	1	123657013/0	Washer			
53	1	123044219/0	Bushing			





# Housing

[illegible]