

# Spare Part Book



## AGE



GEO Italy S.R.L.

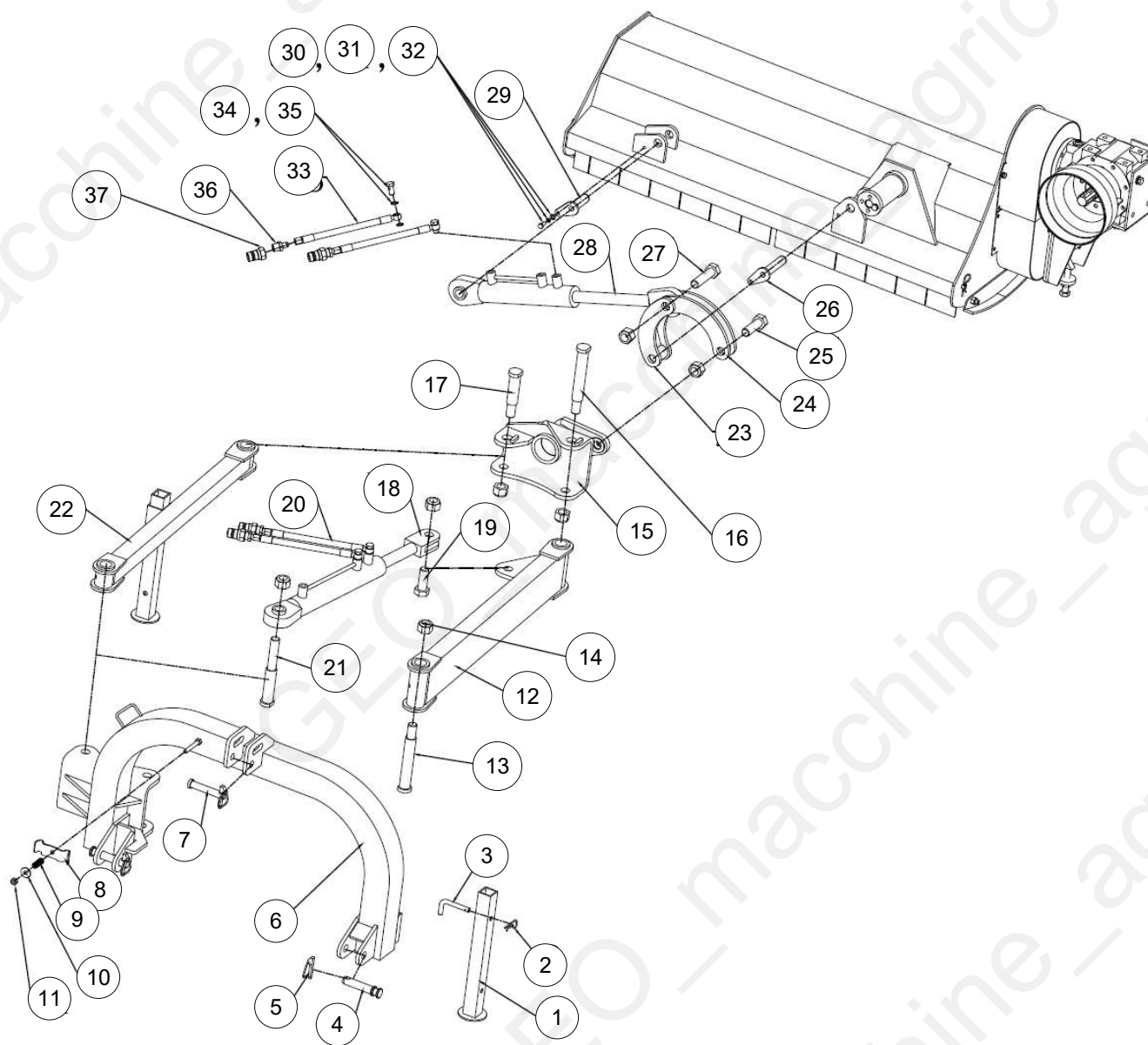
Latest release: 16/03/2021

Via G. Abbate, 215, 14054 Castagnole delle Lanze AT

Page 1

# Table of Contents

Tavola	Page
AGE_parte 1	3
AGE_parte 2	6



Machine: AGE

Assembly: AGE\_parte 1



Pos	Code	Description	NOTE	Q.
1	AGL125.1011	Supporting Leg		2
2	RP-3.2	R Pin 3.2		2
3	AGL125.125	Pin for supporting leg		2
4	DM120.107	Pin		2
5	LP-12	Lock Pin 12		3
6	AGE125.011	Three Point Hitch Weldment		1
7	AGL125.110	Top Pin		1
8	AGE125.101	Clip For Oil Hose		1
9	AGE125.102	Spring		1
10	GB96-10	Washer 10		1
11	GB889.1-M10	Locking nut M10		1
12	AGL125.1113	Connection Weldment		1
13	AGL125.1002	Axle 160		1
14	GB889.1-M24	Lock Nut M24		7
15	AGL125.1023	Swing Weldment		1
16	AGL125.1002	Axle 160		1
17	AGL125.112	Axle		1
18	AGL125.041	Moving Cylinder		1
19	GB5782-M24X65	Bolt M24x65		1
20	AGL125.043	Oil Hose For Moving Cylinder		2
21	AGL125.111	Axle		1
22	AGL125.1020	Connection Bar Weldment		1
23	AGL125.1022	Link Plate Weldment		1
24	AGL125.116	Turn Link Plate		2
25	GB5782-M24X75	Bolt M24x75		1

GEO Italy S.R.L.

Via G. Abbate, 215, 14054 Castagnole delle Lanze AT

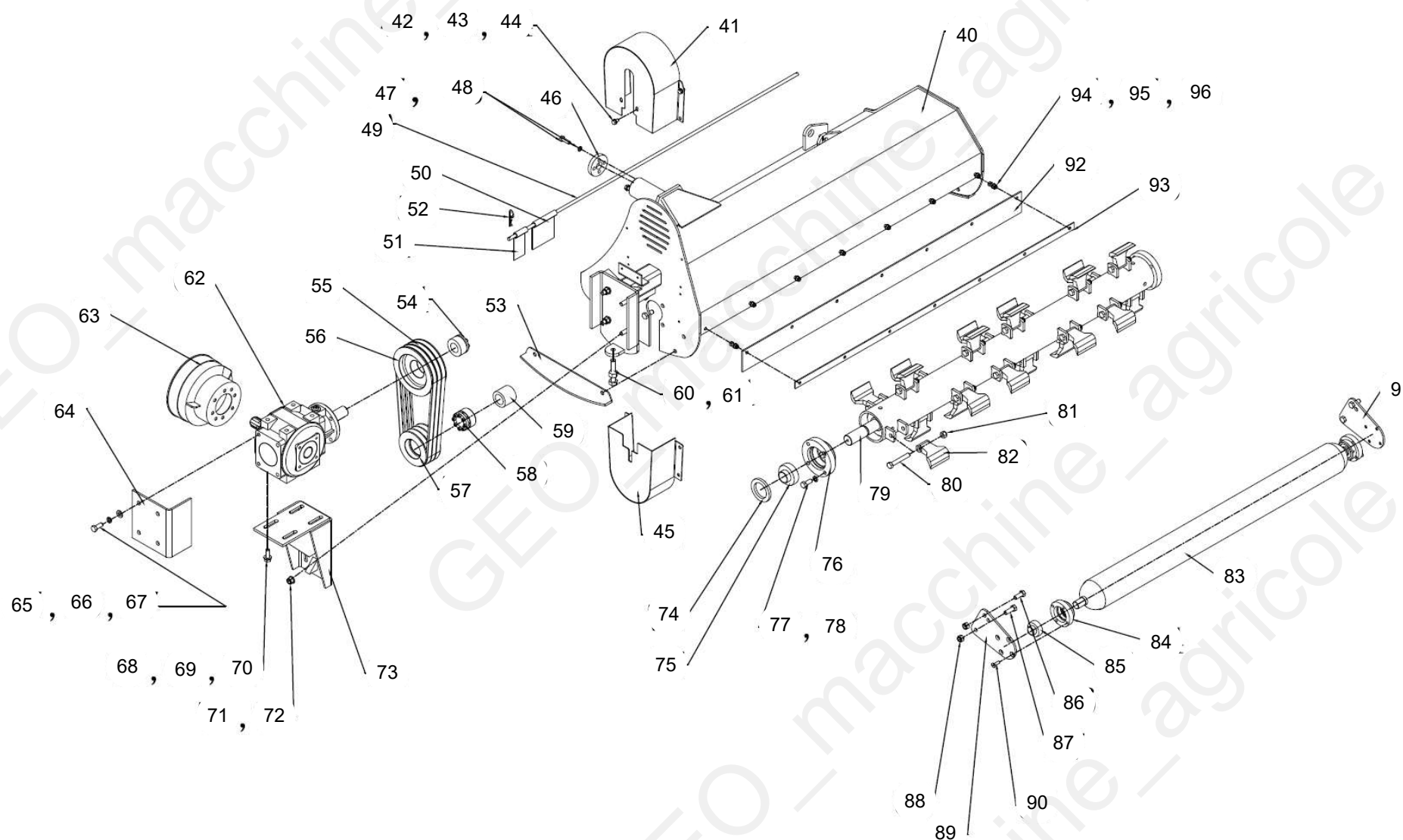
Page 4

Machine: AGE

Assembly: AGE\_parte 1



Pos	Code	Description	NOTE	Q.
26	AGL125.115	Pin		1
27	GB5782-M24X95	Bolt M24x95		1
28	AGL125.040	Twirl Cylinder		1
29	AGL125.114	Pin		1
30	GB5783-M8x20	bolt M8X20		2
31	GB93-8	Spring washer 8		2
32	GB97.1-8	Plain washer 8		2
33	AGL125.044	Oil Hose For Twirl Cylinder		2
34	AGL125.1004	Hydraulic Bolt		4
35	AGL125.1005	Cu Washer 14.2x 19x1.5		8
36	AGL125.1003	Straight Connector		4
37	QC-R1/2-M	Quick Connector R1/2		4



Machine: AGE

Assembly: AGE\_parte 2



Pos	Code	Description	NOTE	Q.
40	AGE125.012	Cover Weldment 125		1
40	AGE145.012	Cover Weldment 145		0
40	AGE165.012	Cover Weldment 165		0
41	AGE125.013	Upper Belt Cover		1
42	GB5783-M8x16	bolt M8X16		10
43	GB93-8	Spring washer 8		10
44	GB97.1-8	Plain washer 8		10
45	AGE125.014	Lower Belt Cover		1
46	AGL125.122	Fixed Plate		1
47	GB5783-M10x30	Bolt M10X30		4
48	GB93-10	spring washer 10		4
49	AGE125.108	Stick 125		1
49	AGE145.108	Stick 145		0
49	AGE165.108	Stick 165		0
50	AGL125.123	Fender 125		12
50	AGL145.123	Fender 145		1
50	AGL165.123	Fender 165		1
51	AGL125.127	Narrow Fender		1
52	RP-3.2	R Pin 3.2		2
53	AGL125.015	Skid		2
54	Z3-33X65	Ringfeder Z3-33X65		1
55	GB/1154-17.39	BELT SP B 39 (991Li)		3
56	EFG120.106.3	Big belt pulley 170mm 3 grooves		1
57	EFG120.105.3	small belt pulley 120mm 3 grooves		1
58	JB/T7934Z3/35X60	Swellable sleeve 35X60		1

GEO Italy S.R.L.

Via G. Abbate, 215, 14054 Castagnole delle Lanze AT

Page 7



Machine: AGE

Assembly: AGE\_parte 2



Pos	Code	Description	NOTE	Q.
59	RK120.109.2	Spacer lower for Pulley 2 grooves		1
59	RK120.109.3	Spacer lower for Pulley 3 grooves		1
60	GB5783-M16x80	Bolt M16x80		1
61	GB6170-M16	Nut 16		1
62	XH50.300Z.03W	Gearbox AGE-(AGF140-180)		1
63	AGL125.130	PTO Shaft Protection Cover		1
64	AGE125.103	Side Gearbox Protection Weldment		1
65	GB5783-M12x30	Bolt M12X30		4
66	GB93-12	spring washer 12		4
67	GB97.1-12	plain washer 12		4
68	GB5783-M12x35	Bolt M12X35		4
69	GB93-12	spring washer 12		4
70	GB97.1-12	plain washer 12		4
71	GB889.1-M12	Locking nut M12		4
72	GB97.1-12	plain washer 12		4
73	AGF140.026	Adjusting Frame For the Gearbox		1
74	GB13871-94-55x80x8	Oil seal FB55x80x8		1
75	UC207	Bearing UC207		2
76	AGL125.118	Bearing Seat		2
77	GB5783-M12x30	Bolt M12X30		8
78	GB93-12	spring washer 12		8
79	AGL125.1024	Blade Axle 125		1
79	AGL145.024	Blade Axle 145		1
79	AGL165.024	Blade Axle 165		1
80	GB5782-M12x80	Bolt M12x80		20

GEO Italy S.R.L.

Via G. Abbate, 215, 14054 Castagnole delle Lanze AT

Page 8



Machine: AGE

Assembly: AGE\_parte 2



Pos	Code	Description	NOTE	Q.
81	GB889.1-M12	Locking nut M12		20
82	EF.100.00.102	Blade Ø 12		1
82	EF.100.00.107	Hammer Ø12		20
83	AGL125.1016	Roller Weldment 125		1
83	AGL145.016	Roller Weldment 145		1
83	AGL165.016	Roller Weldment 165		1
84	AGL125.113	Bearing Seat		2
85	UC205	Bearing UC205		2
86	GB5783-M12x30	Bolt M12X30		4
87	GB5783-M12x35	Bolt M12X35		2
88	GB889.1-M12	Locking nut M12		6
89	AGL125.106	Roller Plate - Left		1
90	GB2673-M8X25	Bolt M8x25		8
91	AGL125.107	Roller Plate - Right		1
92	AGE125.104	Rubber Guard Plate 125		1
92	AGE145.104	Rubber Guard Plate 145		1
92	AGE165.104	Rubber Guard Plate 165		1
93	AGE125.105	Press Plate 125		1
93	AGE145.105	Press Plate 145		1
93	AGE165.105	Press Plate 165		1
94	GB5783-M8x25	bolt M8X25		7
95	GB97.1-8	Plain washer 8		7
96	GB889.1-M8	Locking nut M8		7