

AGS



GEO Italy S.R.L.

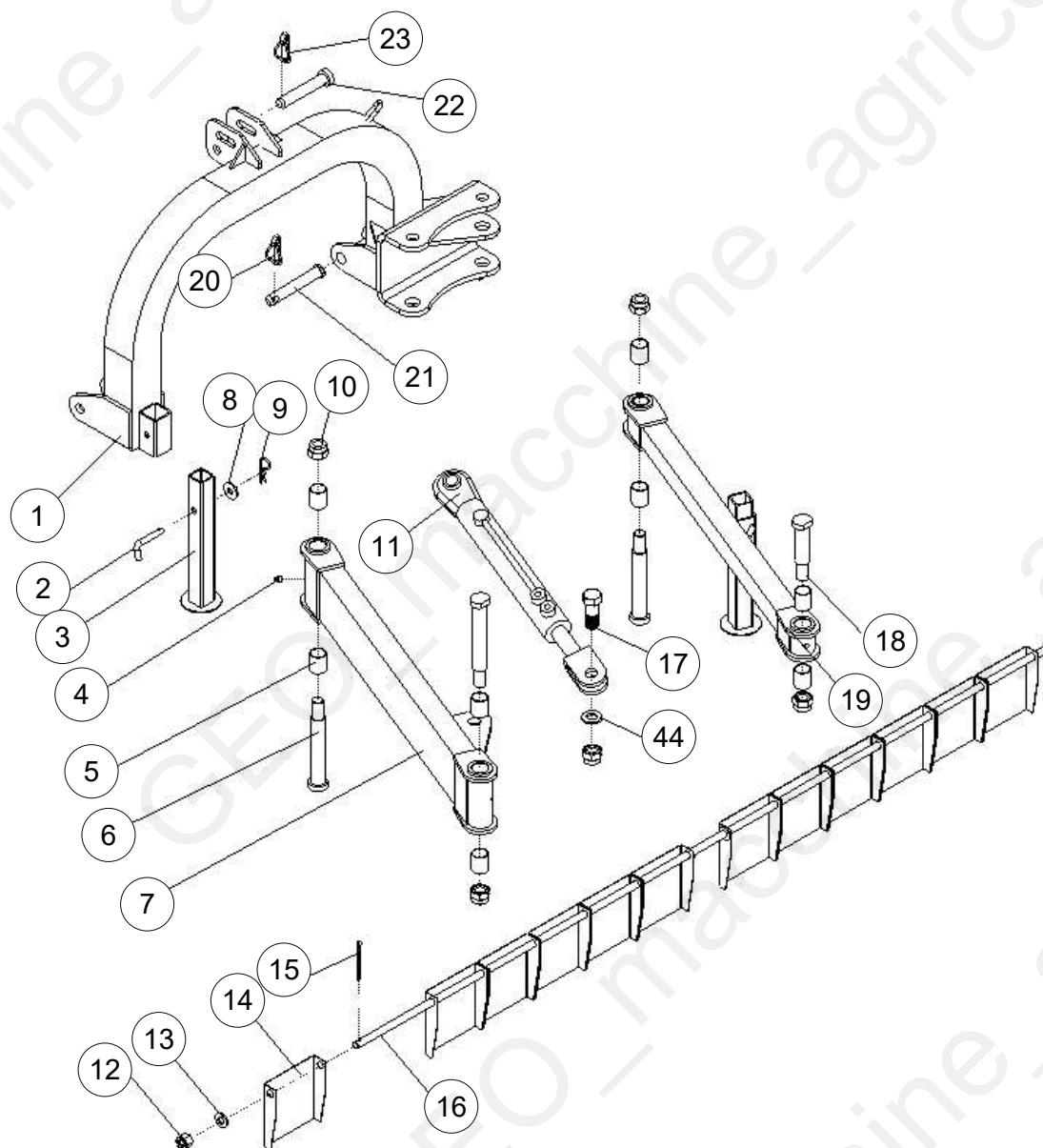
Latest release: 16/03/2021

Via G. Abbate, 215, 14054 Castagnole delle Lanze AT

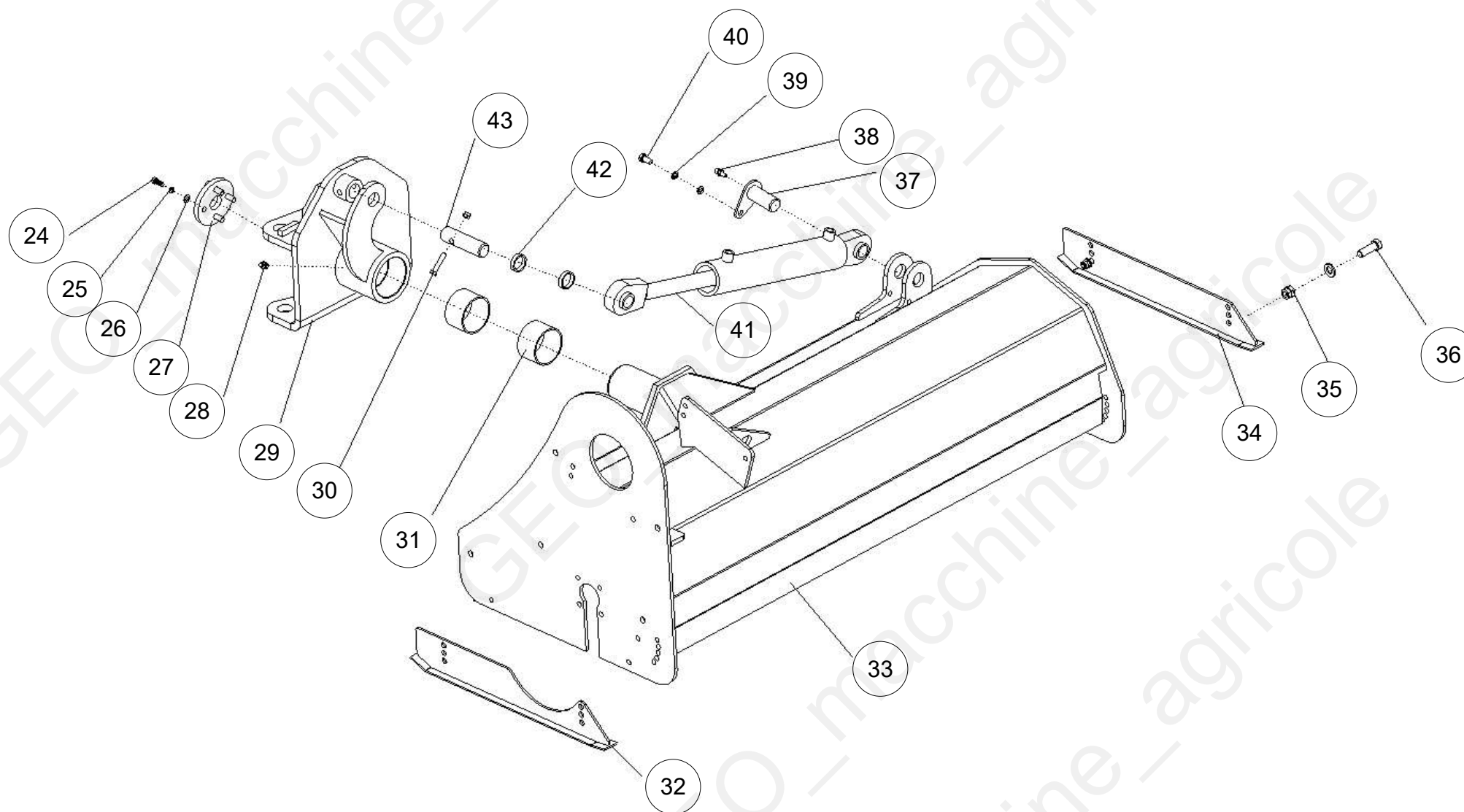
Page 1

Table of Contents

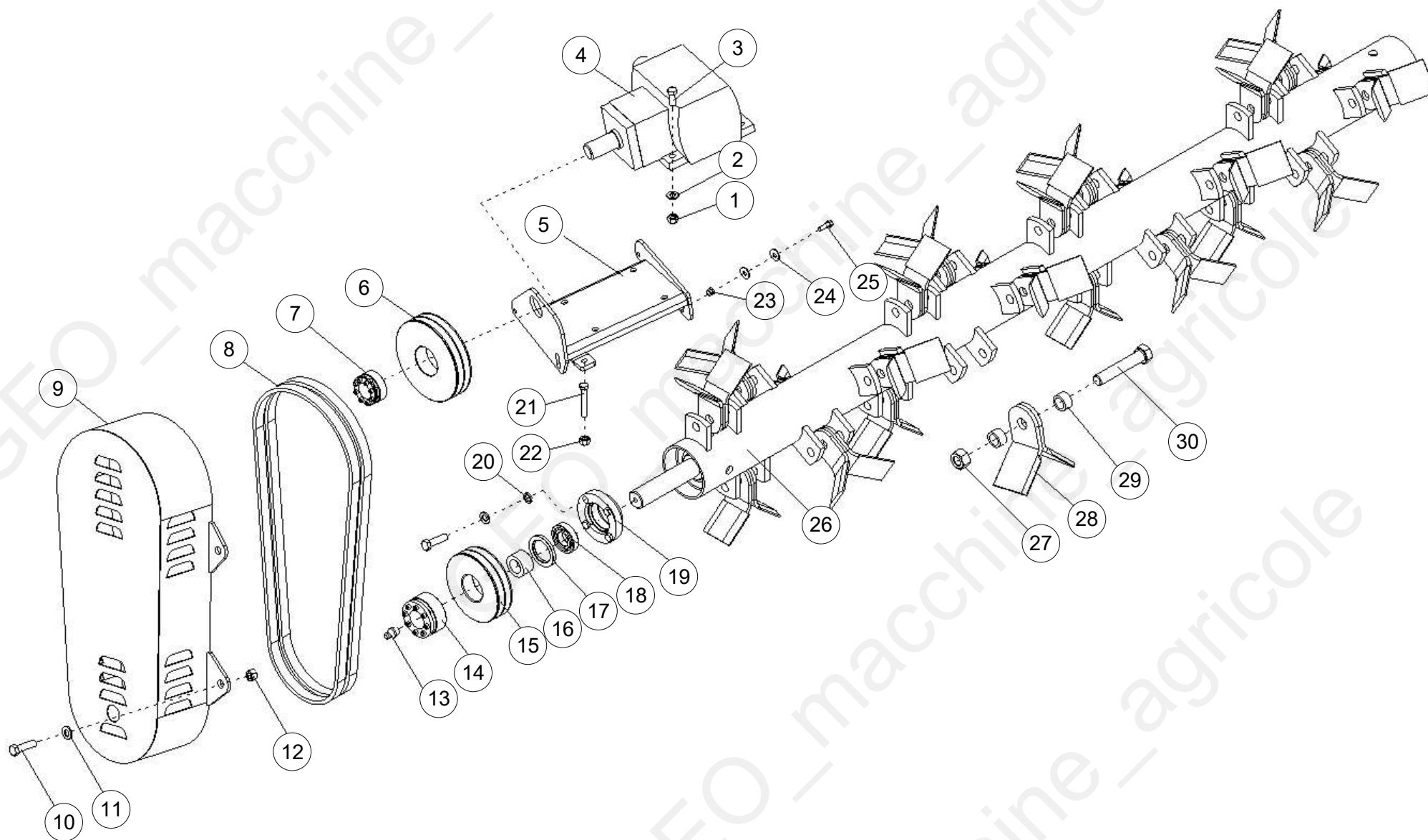
Tavola	Page
AGS_parte 1	3
AGS_parte 2	5
AGS_parte 3	7
AGS_parte 4	10



Pos	Code	Description	NOTE	Q.
1	AGS105.01.012	Hanging weldment		1
2	1G135.00.107	Plug Pin		2
3	AGS105.01.017	Supporting frame		2
4	GB/T1152-89	Oil cup		5
5	SF-2/.25X30X30	Bushing 25X30X30		8
6	AGS105.01.107	Pin(L)		3
7	AGS105.01.018	Big swinging arm		1
8	GB/T97.1-2002-12	Plain washer 12		2
9	EFGC125.110	R Pin 3.2		2
10	GB/T889.1-2000-24	Locking nut M24		5
11	AGS105.01.105	Parallel movement cylinder		1
12	GB/T6179	Nut M8		1
13	GB/T97.1-2002-8	Plain washer 8		17
14	EFGC125.113	Fender		11
15	GB/T91-2000/2.5x40	Cotter 2.5x40		1
16	AGS105.01.014	Shaft for fender		1
17	GB/T5782-2000-M24X65	Bolt M24X65		1
18	AGS105.01.106	Pin(S)		1
19	AGS105.01.019	Small swinging arm		1
20	FEL-12	diam12 pin		3
21	AGL125.110	Top Pin		2
22	EFGC125.123	HITCH PIN-TOP		1
23	FEL-8	diam8 pin		1
44	GB/T97.1-2002-24	Plain washer 24		1



Pos	Code	Description	NOTE	Q.
24	GB/T5782-2000-M10x35	Bolt M10x35		4
25	GB/T93-87-10	Spring washer 10		4
26	GB/T97.1-2002-10	Plain washer 10		4
27	AGS105.01.101	Rotating shaft cover plate		1
28	GB/T1152-89	Oil cup		1
29	AGS105.01.013	Rotating shaft		1
30	GB/T5782-2000-M8x50	Bolt M8X50		1
31	SF-2/.65X70X40	Bushing 65X70X40		2
32	AGS105.01.016	Base plate (L)		1
33	AGS105.01.011	The cover weldment		1
34	AGS105.01.015	Base plate (R)		1
35	GB/T889.1-2000-8	Locking nut M8		5
36	GB/T5782-2000-M8x25	Bolt M8x25		4
37	AGS105.01.104	Lower pin of rotary cylinder		1
38	GB/T1152-89	Oil cup		1
39	GB/T93-87-8	Spring washer 8		1
40	GB/T5782-2000-M8x16	Bolt M8X16		1
41	AGS105.01.103	Rotary cylinder		1
42	SBE180.402	Pad of cylinder		4
43	AGS105.01.102	Upper pin of rotary cylinder		1



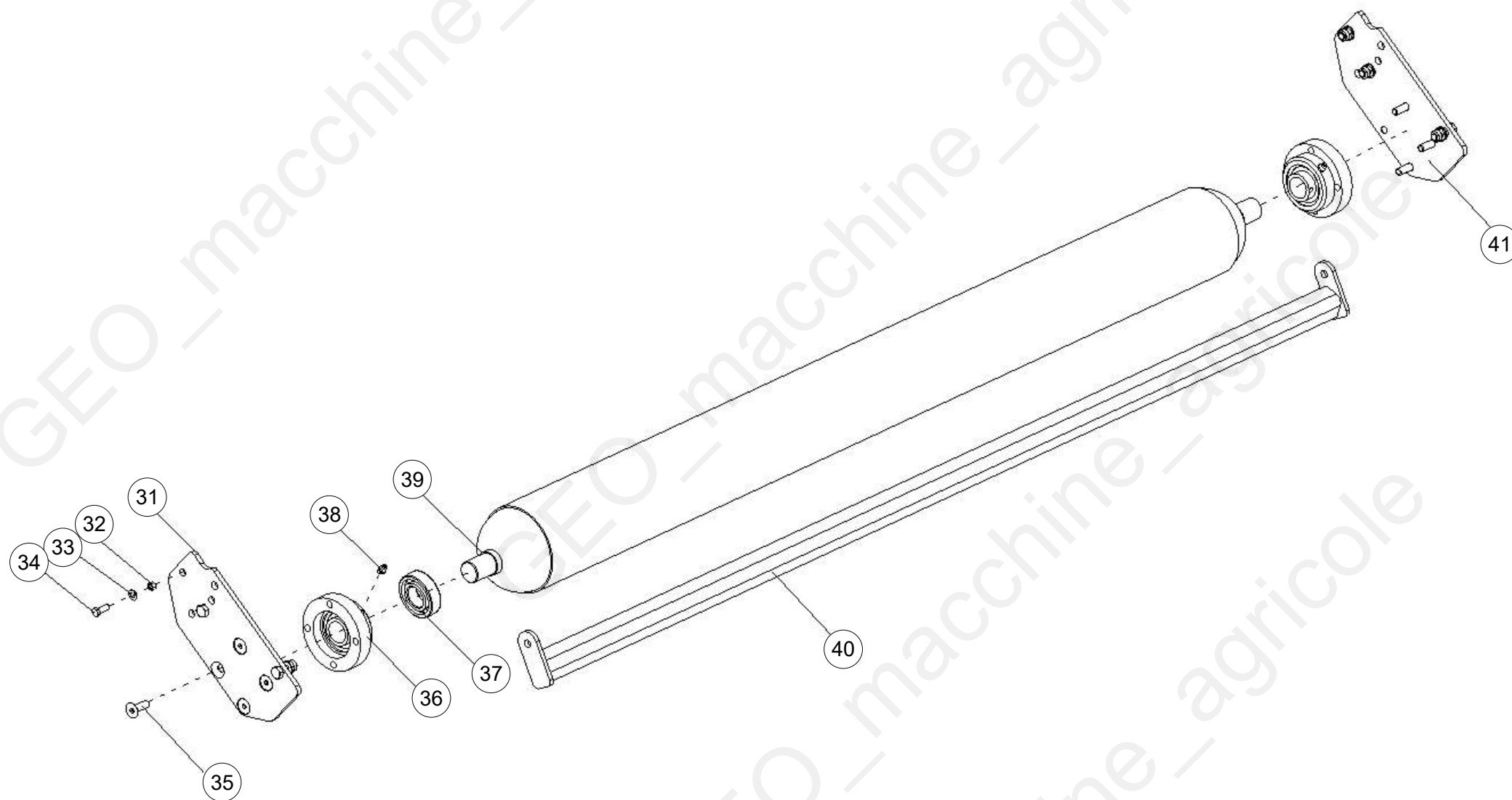
Pos	Code	Description	NOTE	Q.
1	GB/T889.1-2000-M10	Locking nut M10		4
2	GB/T97.1-2002-10	Plain washer 10		4
3	GB/T5782-2000-M10x35	Bolt M10x35		4
4	XH30.290Z.01W	Gearbox assembly 35HP		1
5	AGS105.02.012	Gearbox support weldment		1
6	AGS105.02.101	Big belt pulley 155mm 2 grooves		1
7	JB/T7934Z3/33X60	Swellable sleeve 33X60		1
8	GB/1154-13.38	BELT A 38 (965Li)		2
9	AGL125.1026	Belt cover		1
10	GB/T5782-2000-M10x30	Bolt M10x30		4
11	GB/T97.1-2002-10	Plain washer 10		4
12	GB/T889.1-2000-M10	Locking nut M10		4
13	GB/T1152-89	Oil cup		1
14	JB/T7934Z3/35X60	Swellable sleeve 35X60		1
15	EF135.02.105	Small belt pulley 135mm 2 grooves		1
16	EF135.02.109	Oil seal housing		1
17	GB/T13871.1-55x40x8	Oil seal 55x40x8		1
18	GB/T3882-1995	bearing UC 205		2
19	EFGC125.107	Bearing seat UCF205		2
20	GB/T93-87-8	Spring washer 8		8
21	GB/T5783-2000-M10x65	Bolt M10X65		1
22	GB/T6170-2000-M10	Nut M10		1
23	GB/T889.1-2000-8	Locking nut M8		4
24	GB/T97.1-2002-8	Plain washer 8		14
25	GB/T5782-2000-M8x25	Bolt M8x25		12

Machine: AGS

Assembly: AGS_parte 3



Pos	Code	Description	NOTE	Q.
26	EF105.02.011	Blade axle weldment		1
27	GB/T889.1-2000-M12	Locknut M12		18
28	EF.100.00.102	Blade Ø 12		36
29	EF.100.00.103	Spacer 12		36
30	GB/T5785-2000-M12	Nut M12		18



Machine: AGS

Assembly: AGS_parte 4



Pos	Code	Description	NOTE	Q.
31	EF135.03.101	Supporting for roller (L)		1
32	GB/T889.1-2000-8	Locking nut M8		6
33	GB/T97.1-2002-8	Plain washer 8		6
34	GB/T5782-2000-M10x95	Bolt M10X95		6
35	GB/T70.3-2000-M8x25	Hex.head bolt M8X25		8
36	EFGC125.107	Bearing seat UCF205		2
37	GB/T3882-2000	Bearing UC 205		2
38	GB/T1152-89	Oil cup		2
39	EF135.03.011	Roller weldment		1
40	EF135.03.012	Mud shield		1
41	EF135.03.102	Supporting for roller (R)		1