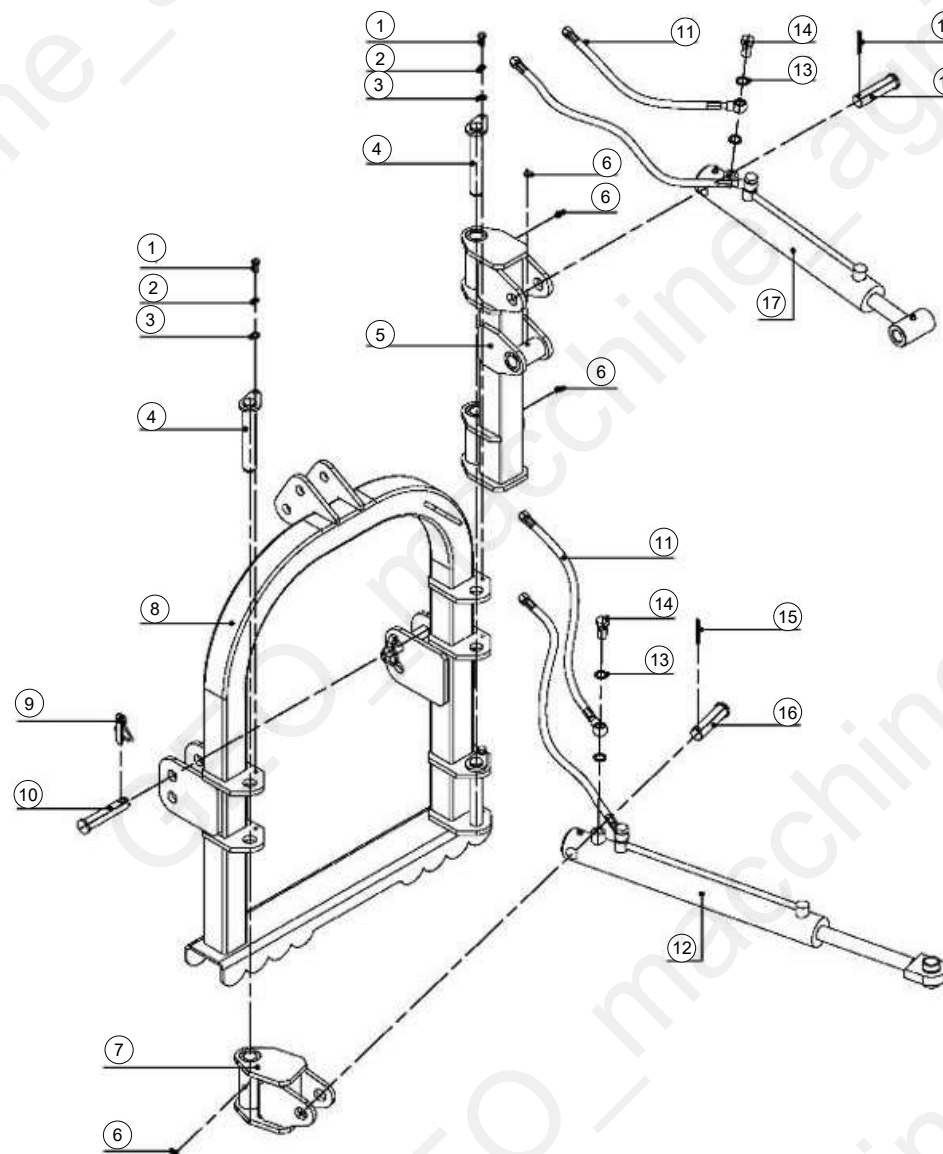


PRO24

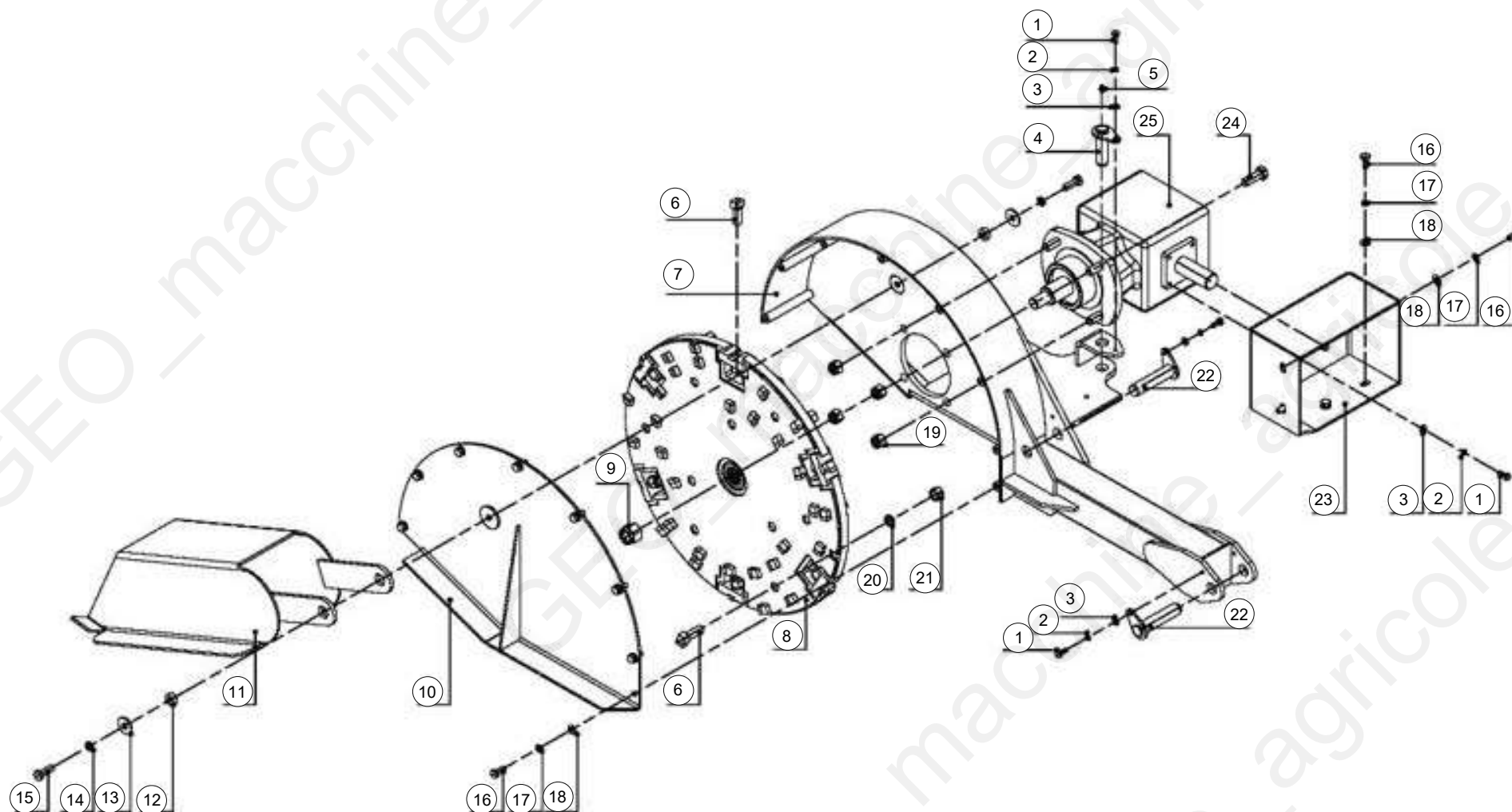


Table of Contents

Tavola	Page
PRO_parte 1	3
PRO_parte 2	5



Pos	Code	Description	NOTE	Q.
1	GB/T5783-2000-M8x20	Bolt M8x20		3
2	GB/.T93-1987-8	SPRING WASHER 8		3
3	GB/T97.1-2002-8	Plain washer 8		3
4	SG24.01.011	AXLE PIN 155		3
5	SG24.01.012	BIG SWAY SEAT WELDMENT		1
6	JB/T7940.1-1995-M8	Oil Cup M8		4
7	SG24.01.013	SMALL SWAY SEAT WELDMENT		1
8	SG24.01.014	HANGING WELDMENT		1
9	GB/T911.92	LOCK PIN 12		2
10	SG24.01.101	LOWER HANGING PIN		2
11	SG24.01.015	OIL HOSE		4
12	SG24.01.016	SWAY CYLINDER FOR RIGHT AND LEFT MOVEMENT		1
13	JB/T.982-1977	Seal washer 16		8
14	BH5.60.110	HOLLOW BOLT 16		4
15	GB/T91-2000/5x40	split pin 5x40		2
16	SG24.01.102	AXLE PIN 97		2
17	SG24.01.017	SWAY CYLINDER FOR UP AND DOWN MOVEMENT		1



Pos	Code	Description	NOTE	Q.
1	GB/T5783-2000-M8x20	Bolt M8x20		7
2	GB/.T93-1987-8	SPRING WASHER 8		7
3	GB/T97.1-2002-8	Plain washer 8		7
4	SG24.02.011	AXLE PIN 85		1
5	JB/T7940.1-1995-M8	Oil Cup M8		1
6	SG24.02.012	BLADE		36
7	SG24.02.013	SWAY ARM WELDMENT		1
8	SG24.02.014	BLADE ROTOR WELDMENT		1
9	GB/T6178-1986	SLOTTED NUT M24		1
10	SG24.02.015	COVER WELDMENT		1
11	SG24.02.016	PROTECTION COVER WELDMENT		1
12	SG24.02.101	SPACER		2
13	GB/T96.2-2002-12	Plain washer 12		2
14	GB/.T93-1987-12	SPRING WASHER 12		2
15	GB/T5783-2000-M12x35	Bolt M12x35		2
16	GB/T5783-2000-M10x25	Bolt M10x25		12
17	GB/.T93-1987-10	SPRING WASHER 10		12
18	GB/T97.1-2002-10	Plain washer 10		12
19	GB/T889.1-2000-16	Locking Nut M16		4
20	GB/.T93-1987-16	SPRING WASHER 16		36
21	GB/T6171-2000	HEX NUT FIN THREAD M16		36
22	SG24.02.018	AXLE PIN 115		2
23	SG24.02.017	GEARBOX PROTECTION COVER		1
24	GB/T5783-2000-M16x50	Bolt M16x50		4
25	XH50.169Z.01L	GEARBOX ASSEMBLY		1